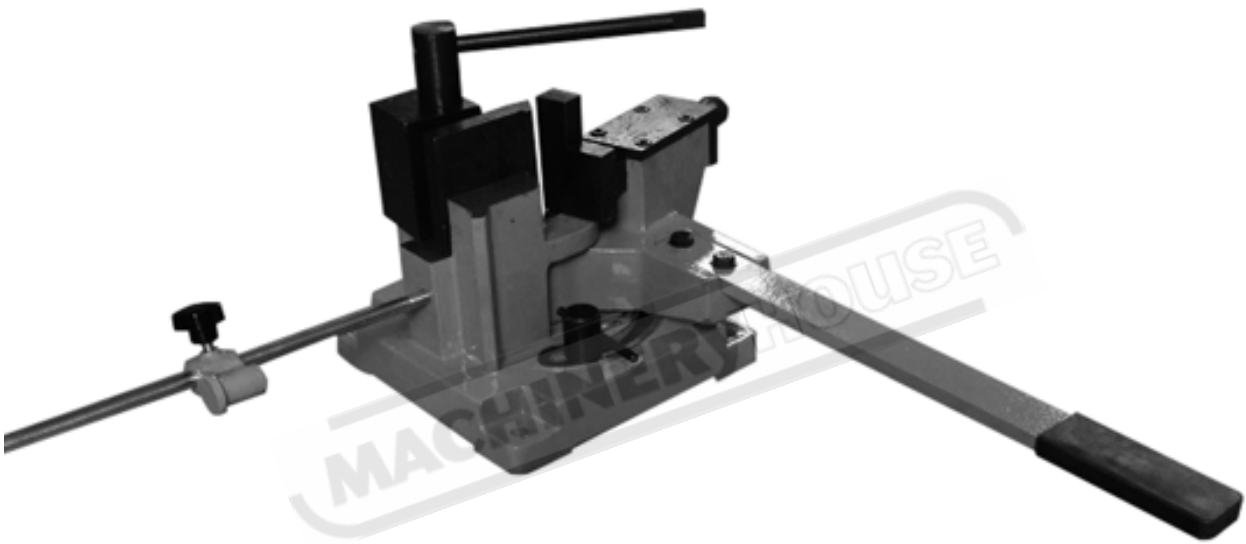


# BAR BENDER UB-100H



**Assembly and Operating Instructions**

## **SPECIFICATIONS UNIVERSAL BENDER**

**Capacities: Round steel: Dia.22mm(warm),Dia,20mm(cold)  
Flat steel:100×12mm(warm),100×7mm(cold)  
Square steel:22×22mm(warm),20×20mm(cold)**

**Packing Size:55×32×29cm**

**Net Weight:30kgs**

## **SAVE THIS MANUAL**

**You will need this manual for the safety instructions,operating procedures. Maintenance procedures,trouble shooting,parts list,and diagram,Keep your invoice with this manual.Write the invoice number on the inside of the front cover. Keep both this manual and your invoice in a saft dry place for futre reference.**

## **READ ALL INSTRUCTIONS BEFORE USING THE TOOL!**

- 1.KEEP WORK ARE CLEAN.Cluttered areas invite injuries.**
- 2.OBSERVE WORK ARE CONDITONS.Do not use tools in damp, wet,or poorly in locations.Don't expose to rain.Keep work areas well fit.Do not use electrically powered equipment in the presence of flammable gases or liquids.**
- 3.KEEP CHILDREN AWAY.Children must never be allowed in the work area. Don't let them handle the benders.**
- 4.STORE IDLE EQUIPMENT. When not in use ,tools must be locked up in a dry location without rust.Always lock up tools and keep out or reach of children.**
- 5.DO NOT FORCE THE BENDER.It will do the job better and more safety at the rate for which it was intended.Do not use inappropriate attachments in an attempt to exceed the tools capacities.**
- 6.USE EYE,EAR AND BREATHING PROTECTION.Always wear ANSI approved impact safety goggles.**
- 7.DO NOT OVERREACH.Keep proper footing and balance at all times.**
- 8.MAINTAIN TOOLS WITH CARE.Keep tools clean for better and safer performance.Keep handle dry, clean, and free from oil and grease.**

**9. STAY ALERT.** Watch what you are doing. Do not operate any machinery when you are tired.

**10. CHECK FOR DAMAGED PARTS.** Before using any tool, any part that appears damaged should be carefully checked to determine that it would operate properly and perform its intended function. Check for alignment and binding of moving parts, and broken parts or mounting fixtures, and any other condition that may affect proper operation. Any part that is damaged should be properly repaired or replaced by an authorized service center unless otherwise indicated elsewhere in the instruction manual.

**11. REPLACEMENT PARTS AND ACCESSORIES.** When servicing, use only identical replacement parts. Only use accessories intended for use with this tool.

**12. DO NOT OPERATE TOOL IF UNDER THE INFLUENCE OF ALCOHOL OR DRUGS.** Read warning labels on prescriptions to determine if your judgment or reflexes are impaired while taking drugs. If there is any doubt, do not operate the tool.

## **OPERATING PROCEDURES**

**Install:**

**1. to fix the base #12 into a solid workbench at first.**

**2. to connect the handle #9 to the rotary block, and then screw tightly the bolts #7.**

**3. to insert the gauge pole #18 into the hole of the base #12, and fix the gauge clamp with the gauge pole #18 according to the workpiece size, then lock by the wheel nut #16.**

**4. to move the eccentric shaft #14 by using the handle pole, to use the die #1 to press the workpiece with die #2.**

**5. to adjust the angle of the workpiece and then to lock the stopped shaft #5 by the square nut #13, thus the rotary block can be fixed.**

## Operating:

1.to clamp the workpiece with the dies, to make the edge of the sliding block #3 close to the workpiece by turning the handle #23.to turn the rotary block #10 by the handle #9 to bend the workpiece as you like.

2.to turn the eccentric shaft #14 and loose the block #1, the workpiece can be taken out.

## Lubricating:

1.there are enough lubrication oil between the rotary block #10 and the base #12 when assembly in our factory.Don't open them,thus can cause the fixed shaft #11 lossen and result in the machine can not use.

2.the lubricating of the sliding block:(every half year to one year):loose the screw #4,take out the press plate #6,turn the handle#23,screw out the scre shaft #19 from the sliding block#3,add the lubrication oil to the shaft and sliding body holes, add the lubrication oil into the slot after take out the sliding body.After finished the lubricating ,please screw the shaft into the slide body counterclockwise and then fixed the press plate #6,it's ok for starring work.

## PARTS LIST

Part#	Description	Qty	Part#	Description	Qty
1	Block	1	13	squaare nut	1
2	Die Plate	1	14	Eccentric shaft	1
3	Sliding block	1	15	shaft	1
4	Screw M3 x 20	2	16	Handle nut M8X15	1
5	stopped shaft	1	17	Gauge Clamp	1
6	Press Plate	1	18	Gauge Shaft	1
7	Bolt M10X25	2	19	Screw shaft	1
8	Washer 10	2	20	Cover Plate	1
9	Handle	1	21	Spring pin 5X30	1
10	Rotary block	1	22	Screw M8x16	4
11	Fixed shaft	1	23	Handle	1
12	base	1	24		

it has been found that to ensure a better bend and put less load on the operator and machine  
That after winding in the bending jaw # 30 (knob 23) it needs to be wound out one to three turns depending on the  
thickness of material.  
Thicker the material the more it should be wound out

