



OPERATOR'S MANUAL

Metal Working



METAL FORMING SHRINKER STRETCHER MODEL: MSS-14F (B8850)

www.machineryhouse.com.au



Table of Contents

INTRODUCTION.....	1
GENERAL NOTES.....	1
SAFETY INSTRUCTIONS	2
SAFETY PRECAUTIONS	4
Dear Valued Customer:.....	4
TECHNICAL SPECIFICATIONS.....	6
UNPACKING AND CHECKING CONTENTS.....	7
Cleaning	7
TRANSPORTING AND LIFTING	8
INSTALLATION.....	8
Anchoring the Machine.....	9
GETTING TO KNOW YOUR MACHINE	10
ASSEMBLY AND SET UP	11
Tooling Installation:.....	11
JAWS	14
OPERATION.....	15
MATERIAL SELECTION.....	16
UNDERSTANDING SPRINGBACK	16
LUBRICATION AND MAINTENANCE	17
PARTS DIAGRAM	18
Parts List	22



INTRODUCTION

The quality and reliability of the components assembled on a Baileigh Industrial machine guarantee near perfect functioning, free from problems, even under the most demanding working conditions. However if a situation arises, refer to the manual first. If a solution cannot be found, contact the distributor where you purchased our product. Make sure you have the serial number and production year of the machine (stamped on the nameplate). For replacement parts refer to the assembly numbers on the parts list drawings.

Our technical staff will do their best to help you get your machine back in working order.

In this manual you will find: (when applicable)

- Safety procedures
- Correct installation guidelines
- Description of the functional parts of the machine
- Capacity charts
- Set-up and start-up instructions
- Machine operation
- Scheduled maintenance
- Parts lists

GENERAL NOTES

After receiving your equipment remove the protective container. Do a complete visual inspection, and if damage is noted, **photograph it for insurance claims** and contact your carrier at once, requesting inspection. Also contact your distributor and inform them of the unexpected occurrence. Temporarily suspend installation.

Take necessary precautions while loading / unloading or moving the machine to avoid any injuries.

Your machine is designed and manufactured to work smoothly and efficiently. Following proper maintenance instructions will help ensure this. Try and use original spare parts, whenever possible, and most importantly; **DO NOT** overload the machine or make any unauthorized modifications.



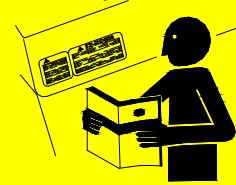
Note: This symbol refers to useful information throughout the manual.



IMPORTANT

PLEASE READ THIS OPERATORS MANUAL CAREFULLY

It contains important safety information, instructions, and necessary operating procedures. The continual observance of these procedures will help increase your production and extend the life of the equipment.



SAFETY INSTRUCTIONS

LEARN TO RECOGNIZE SAFETY INFORMATION

This is the safety alert symbol. When you see this symbol on your machine or in this manual, **BE ALERT TO THE POTENTIAL FOR PERSONAL INJURY!**



Follow recommended precautions and safe operating practices.

UNDERSTAND SIGNAL WORDS

A signal word – **DANGER**, **WARNING**, or **CAUTION** is used with the safety alert symbol. **DANGER** identifies a hazard or unsafe practice that will result in severe **Injury or Death**.



Safety signs with signal word **DANGER** or **WARNING** are typically near specific hazards.



General precautions are listed on **CAUTION** safety signs. **CAUTION** also calls attention to safety messages in this manual.

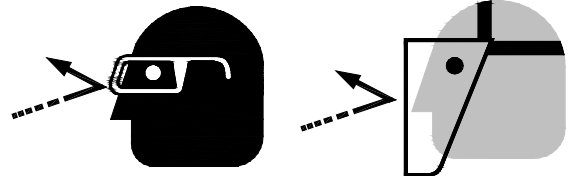


SAVE THESE INSTRUCTIONS.
Refer to them often and use them to instruct others.



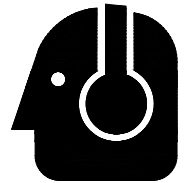
PROTECT EYES

Wear safety glasses or suitable eye protection when working on or around machinery.



PROTECT AGAINST NOISE

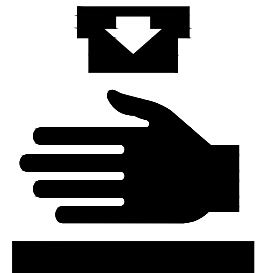
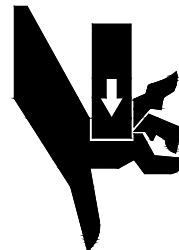
Prolonged exposure to loud noise can cause impairment or loss of hearing. Wear suitable hearing protective devices such as ear muffs or earplugs to protect against objectionable or uncomfortable loud noises.



BEWARE OF PINCH AND CRUSH HAZARD

Keep hands and fingers away from the pivoting jaw Mechanism.

NEVER place your hand or any part of your body in this machine.





SAFETY PRECAUTIONS



Metal working can be dangerous if safe and proper operating procedures are not followed. As with all machinery, there are certain hazards involved with the operation of the product. Using the machine with respect and caution will considerably lessen the possibility of personal injury. However, if normal safety precautions are overlooked or ignored, personal injury to the operator may result.

Safety equipment such as guards, hold-downs, safety glasses, dust masks and hearing protection can reduce your potential for injury. But even the best guard won't make up for poor judgment, carelessness or inattention. **Always use common sense** and exercise **caution** in the workshop. If a procedure feels dangerous, don't try it.

REMEMBER: Your personal safety is your responsibility.



WARNING: FAILURE TO FOLLOW THESE RULES MAY RESULT IN SERIOUS PERSONAL INJURY

Dear Valued Customer:

- All Baileigh machines should be used only for their intended use.
- Baileigh does not recommend or endorse making any modifications or alterations to a Baileigh machine. Modifications or alterations to a machine may pose a substantial risk of injury to the operator or others and may do substantial damage to the machine.
- Any modifications or alterations to a Baileigh machine will invalidate the machine's warranty.

PLEASE ENJOY YOUR BAILEIGH MACHINE! ...PLEASE ENJOY IT SAFELY!

1. **FOR YOUR OWN SAFETY, READ INSTRUCTION MANUAL BEFORE OPERATING THE MACHINE.** Learn the machine's application and limitations as well as the specific hazards.
2. **Only trained and qualified personnel can operate this machine.**
3. **Make sure guards are in place and in proper working order before operating machinery.**
4. **Remove any adjusting tools.** Before operating the machine, make sure any adjusting tools have been removed.
5. **Keep work area clean.** Cluttered areas invite injuries.
6. **Overloading machine.** By overloading the machine you may cause injury from flying parts. **DO NOT** exceed the specified machine capacities.



7. **Dressing material edges.** Always chamfer and deburr all sharp edges.
8. **Do not force tool.** Your machine will do a better and safer job if used as intended. **DO NOT** use inappropriate attachments in an attempt to exceed the machines rated capacity.
9. **Use the right tool for the job. DO NOT** attempt to force a small tool or attachment to do the work of a large industrial tool. **DO NOT** use a tool for a purpose for which it was not intended.
10. **Dress appropriate. DO NOT** wear loose fitting clothing or jewelry as they can be caught in moving machine parts. Protective clothing and steel toe shoes are recommended when using machinery. Wear a restrictive hair covering to contain long hair.
11. **Use eye and ear protection.** Always wear ISO approved impact safety goggles. Wear a full-face shield if you are producing metal filings.
12. **Do not overreach.** Maintain proper footing and balance at all times. **DO NOT** reach over or across a running machine.
13. **Stay alert.** Watch what you are doing and use common sense. **DO NOT** operate any tool or machine when you are tired.
14. **Check for damaged parts.** Before using any tool or machine, carefully check any part that appears damaged. Check for alignment and binding of moving parts that may affect proper machine operation.
15. **Observe work area conditions. DO NOT** use machines or power tools in damp or wet locations. Do not expose to rain. Keep work area well lighted. **DO NOT** use electrically powered tools in the presence of flammable gases or liquids.
16. **Keep children away.** Children must never be allowed in the work area. **DO NOT** let them handle machines, tools, or extension cords.
17. **Store idle equipment.** When not in use, tools must be stored in a dry location to inhibit rust. Always lock up tools and keep them out of reach of children.
18. **DO NOT operate machine if under the influence of alcohol or drugs.** Read warning labels on prescriptions. If there is any doubt, **DO NOT** operate the machine.
19. **DO NOT** touch live electrical components or parts.
20. **Turn off** power before checking, cleaning, or replacing any parts.
21. Be sure **all** equipment is properly installed and grounded according to national, state, and local codes.
22. Inspect power and control cables periodically. Replace if damaged or bare wires are exposed. **Bare wiring can kill!**
23. **DO NOT** bypass or defeat any safety interlock systems.
24. Keep visitors a safe distance from the work area.



TECHNICAL SPECIFICATIONS

Mild Steel Capacity	14ga. (0.0747" [1.897mm])
Aluminum Capacity	12ga. (0.0808" [2.052mm])
Movement	Manual, Foot Pedal
Throat Depth	7" (178mm)
Stand	Included
Shipping Weight	300 lbs. (136kg)
Shipping Dimensions	60" x 44" x 66" (1524 x 1118 x 1677mm)
Based on a material tensile strength of *60000 PSI – mild steel	



Note: *The photos and illustrations used in this manual are representative only and may not depict the actual color, labeling or accessories and may be intended to illustrate technique only.*



Note: *The specifications and dimensions presented here are subject to change without prior notice due to improvements of our products.*



UNPACKING AND CHECKING CONTENTS

Your Baileigh machine is shipped complete. Separate all parts from the packing material and check each item carefully. Make certain all items are accounted for before discarding any packing material.

⚠ WARNING: SUFFOCATION HAZARD! Immediately discard any plastic bags and packing materials to eliminate choking and suffocation hazards to children and animals.
If any parts are missing, **DO NOT** place the machine into service until the missing parts are obtained and installed correctly.

Cleaning

⚠ WARNING: DO NOT USE gasoline or other petroleum products to clean the machine. They have low flash points and can explode or cause fire.

⚠ CAUTION: When using cleaning solvents work in a well-ventilated area. Many cleaning solvents are toxic if inhaled.

Your machine may be shipped with a rustproof waxy coating and/or grease on the exposed unpainted metal surfaces. Fully and completely remove this protective coating using a degreaser or solvent cleaner. Moving items will need to be moved along their travel path to allow for cleaning the entire surface. For a more thorough cleaning, some parts will occasionally have to be removed. **DO NOT USE** acetone or brake cleaner as they may damage painted surfaces.

Follow manufacturer's label instructions when using any type of cleaning product. After cleaning, wipe unpainted metal surfaces with a light coating of quality oil or grease for protection.



Important: This waxy coating is **NOT** a lubricant and will cause the machine to stick and lose performance as the coating continues to dry.





TRANSPORTING AND LIFTING



IMPORTANT: *Lifting and carrying operations should be carried out by skilled workers, such as a truck operator, crane operator, etc. If a crane is used to lift the machine, attach the lifting chain carefully, making sure the machine is well balanced.*

Follow these guidelines when lifting with truck or trolley:

- The lift truck must be able to lift at least 1.5 – 2 times the machines gross weight.
- Make sure the machine is balanced. While transporting, avoid rough or jerky motion, and maintain a safe clearance zone around the transport area.
- Use a fork lift with sufficient lifting capacity and forks that are long enough to reach the complete width of the machine.
- Remove the securing bolts that attach the machine to the pallet.
- Approaching the machine from the side, lift the machine on the frame taking care that there are no cables or pipes in the area of the forks.
- Move the machine to the required position and lower gently to the floor.
- Level the machine so that all the supporting feet are taking the weight of the machine and no rocking is taking place.

INSTALLATION

IMPORTANT:

Consider the following when looking for a suitable location to place the machine:

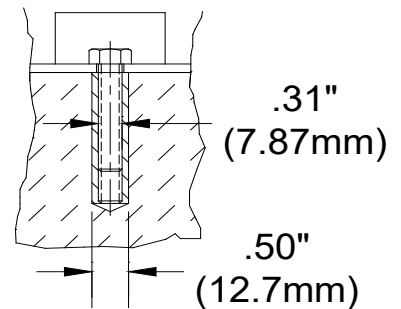
- Overall weight of the machine.
- Weight of material being processed.
- Sizes of material to be processed through the machine.
- Space needed for auxiliary stands, work tables, or other machinery.
- Clearance from walls and other obstacles.
- Maintain an adequate working area around the machine for safety.
- Have the work area well illuminated with proper lighting.
- Keep the floor free of oil and make sure it is not slippery.
- Remove scrap and waste materials regularly, and make sure the work area is free from obstructing objects.



- If long lengths of material are to be fed into the machine, make sure that they will not extend into any aisles.
- **LEVELING:** The machine should be sited on a level, concrete floor. Provisions for securing it should be in position prior to placing the machine. The accuracy of any machine depends on the precise placement of it to the mounting surface.
- **FLOOR:** This tool distributes a large amount of weight over a small area. Make certain that the floor is capable of supporting the weight of the machine, work stock, and the operator. The floor should also be a level surface. If the unit wobbles or rocks once in place, be sure to eliminate by using shims.
- **WORKING CLEARANCES:** Take into consideration the size of the material to be processed. Make sure that you allow enough space for you to operate the machine freely.

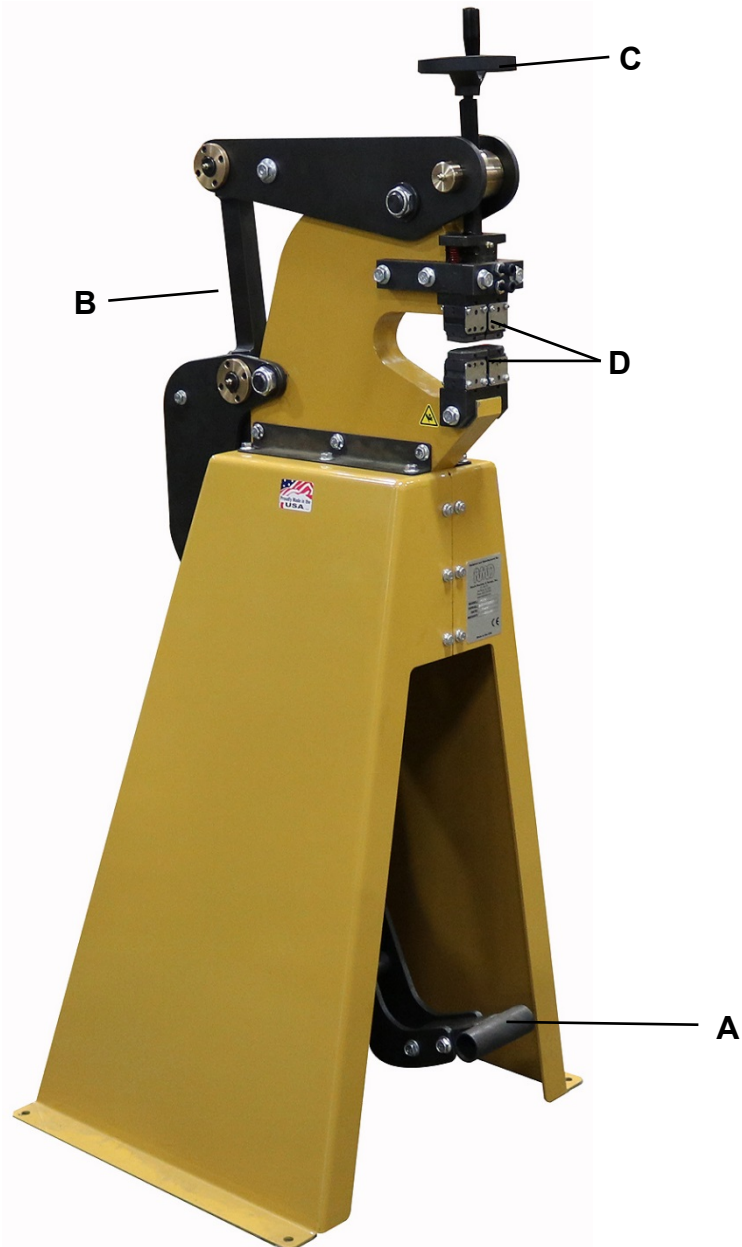
Anchoring the Machine

- Once positioned, anchor the machine to the floor, as shown in the diagram. Use bolts and expansion plugs or sunken tie rods that connect through and are sized for the holes in the base of the stand.
- This machine requires a solid floor such as concrete at a minimum of 4" (102mm) thick. 6" (153mm) minimum is preferred.





GETTING TO KNOW YOUR MACHINE



Item	Description	Function
A	Foot Pedal	Press treadle the pedal to clamp and release the jaws.
B	Connecting Linkage	Connects the foot pedal to the rocker arm to activate the clamping and releasing action for the dies.
C	Gap Adjustment	Increases or decrease the jaw gap.
D	Jaw	Stretch or shrink material



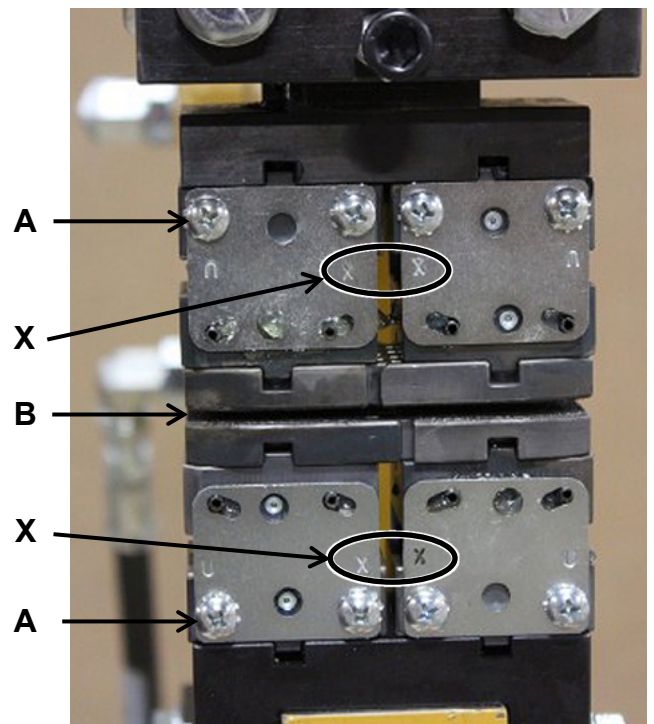
ASSEMBLY AND SET UP

⚠ WARNING: For your own safety, **DO NOT** connect the machine to the power source until the machine is completely assembled and you read and understand the entire instruction manual.

Tooling Installation:

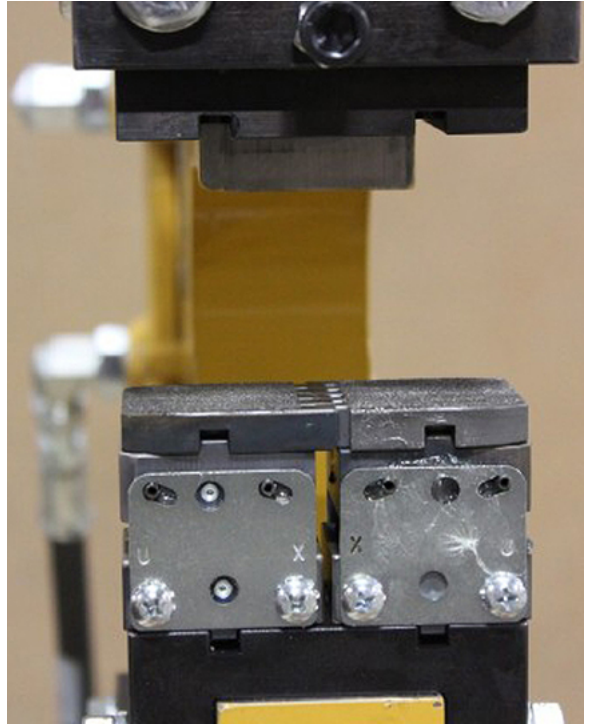
This set up show how the tools should be installed for shrinking. Notice the marking "X" is pointing toward each other in both the top and bottom die sets.

Also notice that the screw heads (A) point away from the material gap (B).

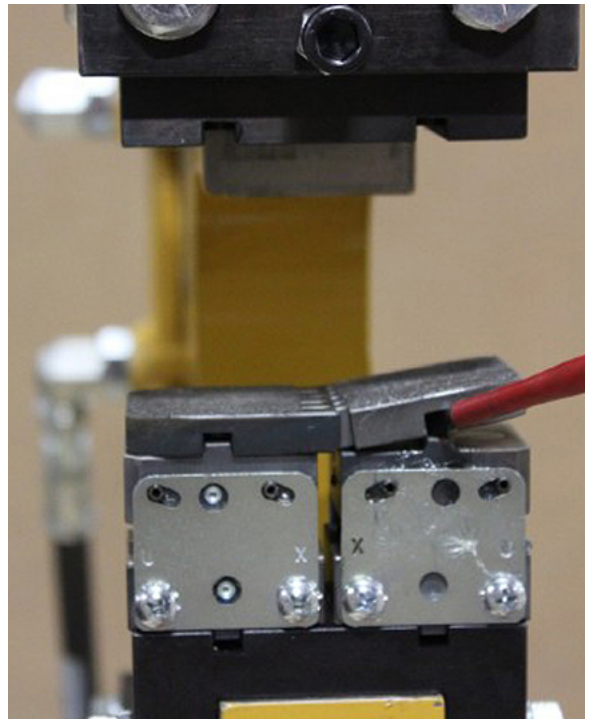




In this view it shows the top die assemblies removed so you can see the jaw orientation. The jaws with serrations are to be used for shrinking.

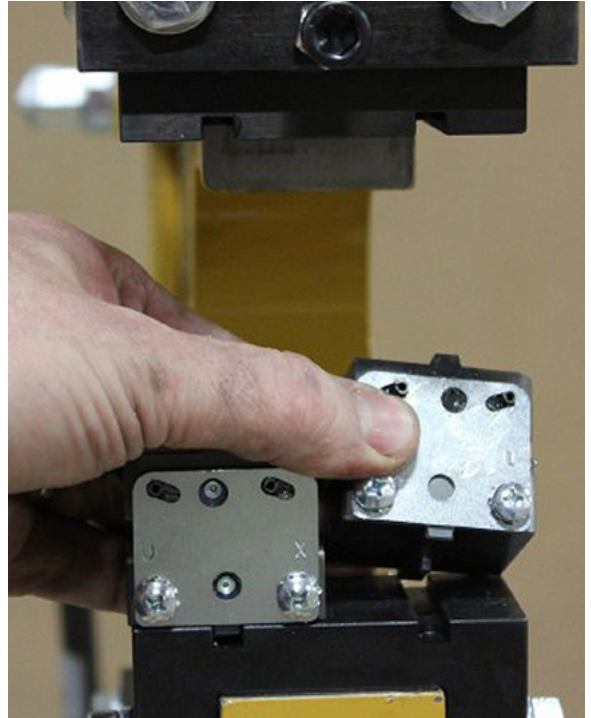


In this view it will shows how to remove the jaw caps. Insert a screw driver into the machined slot to break the magnetic force.

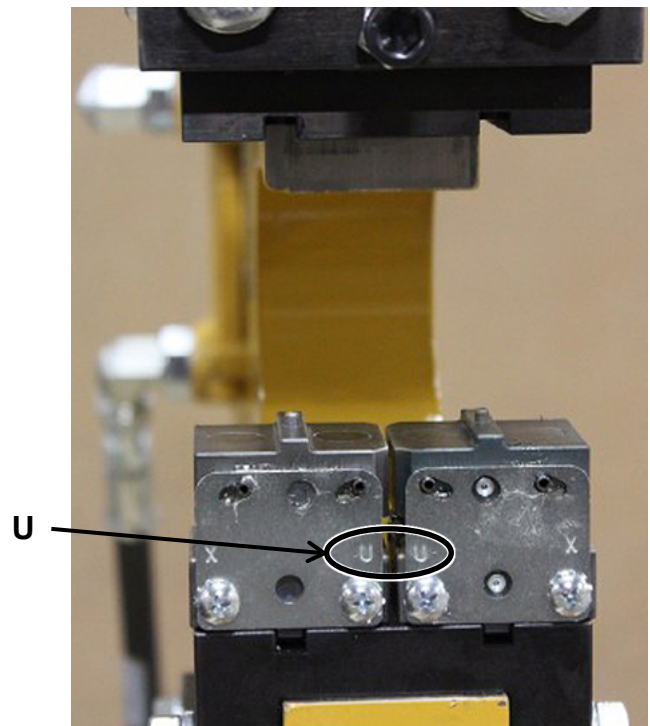




Once the force from the magnet is released, grab onto the assembly and remove.

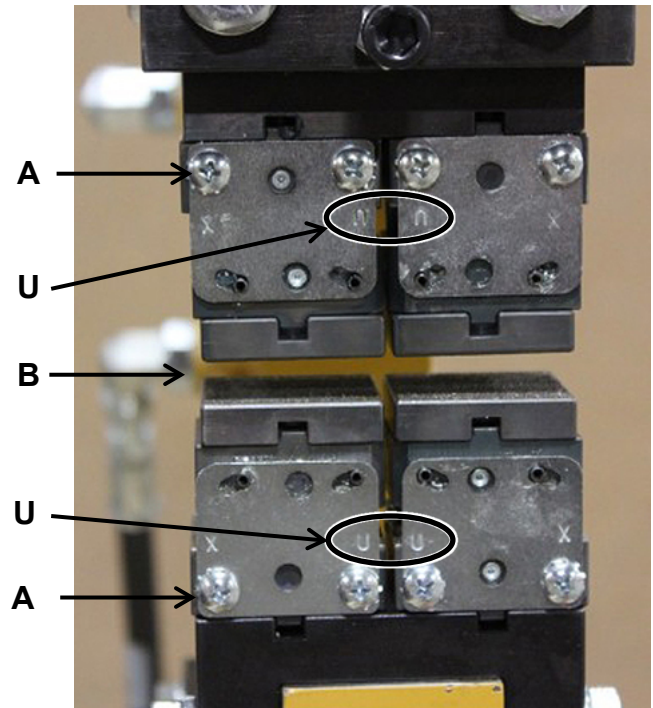


In this view it shows the jaws installed for stretching. Note that the markings "U" are now pointing together, This is the reversing of the jaws from shrinking.





Here you will see both top and bottom mechanisms installed for stretching. Both show the “U” pointing at each other
Also notice that the screw heads (A) point away from the material gap (B).
Here is a completed setup for stretching.



JAWS

- The jaw block assemblies should be lightly lubricated so that they will slide freely and evenly. Use a 40 weight motor oil or similar.
- Clean the blocks regularly to prevent them from collecting dirt and becoming sticky.
- The pads should be kept clean and dry. If the pads become oily or greasy they will slip on the material. Use a mild solvent to remove any oil or grease.
- Use the Square pads for Stretching.
- Use the Serrated pads for Shrinking.





OPERATION

⚠ WARNING: DO NOT step on the foot pedal without having work material between the jaws. The jaws may chip or break causing injury from flying objects.

⚠ CAUTION: Always wear proper eye protection with side shields, safety footwear, and leather gloves to protect from burrs and sharp edges.
Keep hands and fingers clear of the dies.
When handling large heavy sheets make sure they are properly supported.

1. Connect an air supply with 80-120psi (5.5-8.2bar). This will fully open the gap between the jaws.
2. Install the jaws for either shrinking or stretching as desired.
3. Use the hand wheel to set the gap between the upper and lower jaws to allow the material to move easily between them when the jaws are fully open.
4. Practice with the material and place the foot pedal in a location which is comfortable for work. (A comfortable location will allow the operator to be balanced and in control of the material at all times.)
5. Start the hydraulics and begin to form the material by pressing on the foot pedal. The foot pedal may held for a full cycle or be released at any time. When the pedal is released, the air pressure will retract the ram lift and open the jaws. PRACTICE.

Operating Tips

The function of this tool is to shrink or stretch sheet metal up to 14ga. (1.9mm). The principal operation is made when the sheet work piece is placed between the jaws and then applying and releasing force with the foot on and off of the foot pedal. The work piece is moved as required each time the foot pedal is released. By moving smoothly you will be able to make smooth shapes quickly and easily. PRACTICE.

Do a quick test by stepping on the foot pedal and ensuring that the jaws bite down and pull apart for the stretcher. For the shrinker the jaws should bite down and squeeze together. The jaws should return to their open relaxed position between strokes and when the foot pedal is released.



Try using the tool with a sample piece of metal to get a feel for how it operates. Place the material in the middle of the jaw box and step down on the foot pedal to form the metal. Work the leading edge of the material first to break down the initial resistance of the metal. Move the metal back and forth until the desired radius is obtained. You can control the pressure exerted on the metal by how tight the gap is set between the jaw and how long you hold down the foot pedal.

The jaws have fine toothed edges to hold the piece part in place. Marks left on your piece part can be removed with either an abrasive cloth or a wheel for appearance.

MATERIAL SELECTION

 **CAUTION:** It must be determined by the customer that materials being processed through the machine are NOT potentially hazardous to operator or personnel working nearby.

When selecting materials keep these instructions in mind:

- Material must be clean and dry. (without oil)
- Material should have a smooth surface so it processes easily.
- Dimensional properties of material must be consistent and not exceed the machine capacity values.
- Chemical structure of material must be consistent.
- Buy certificated steel from the same vendor when possible.

UNDERSTANDING SPRINGBACK

Springback, also known as elastic recovery, is the result of the metal wanting to return to its original shape after undergoing compression and stretch. After the bending leaf is removed from the metal and the load is released, the piece part relaxes, forcing the bent portion of the metal to return slightly to its original shape. The key to obtaining the correct bend angle is to over bend the metal a little and allow it to spring back to the desired angle. All metals exhibit a certain amount of spring back.



LUBRICATION AND MAINTENANCE



WARNING: Make sure the electrical disconnect is OFF before working on the machine.

Maintenance should be performed on a regular basis by qualified personnel.

Always follow proper safety precautions when working on or around any machinery.

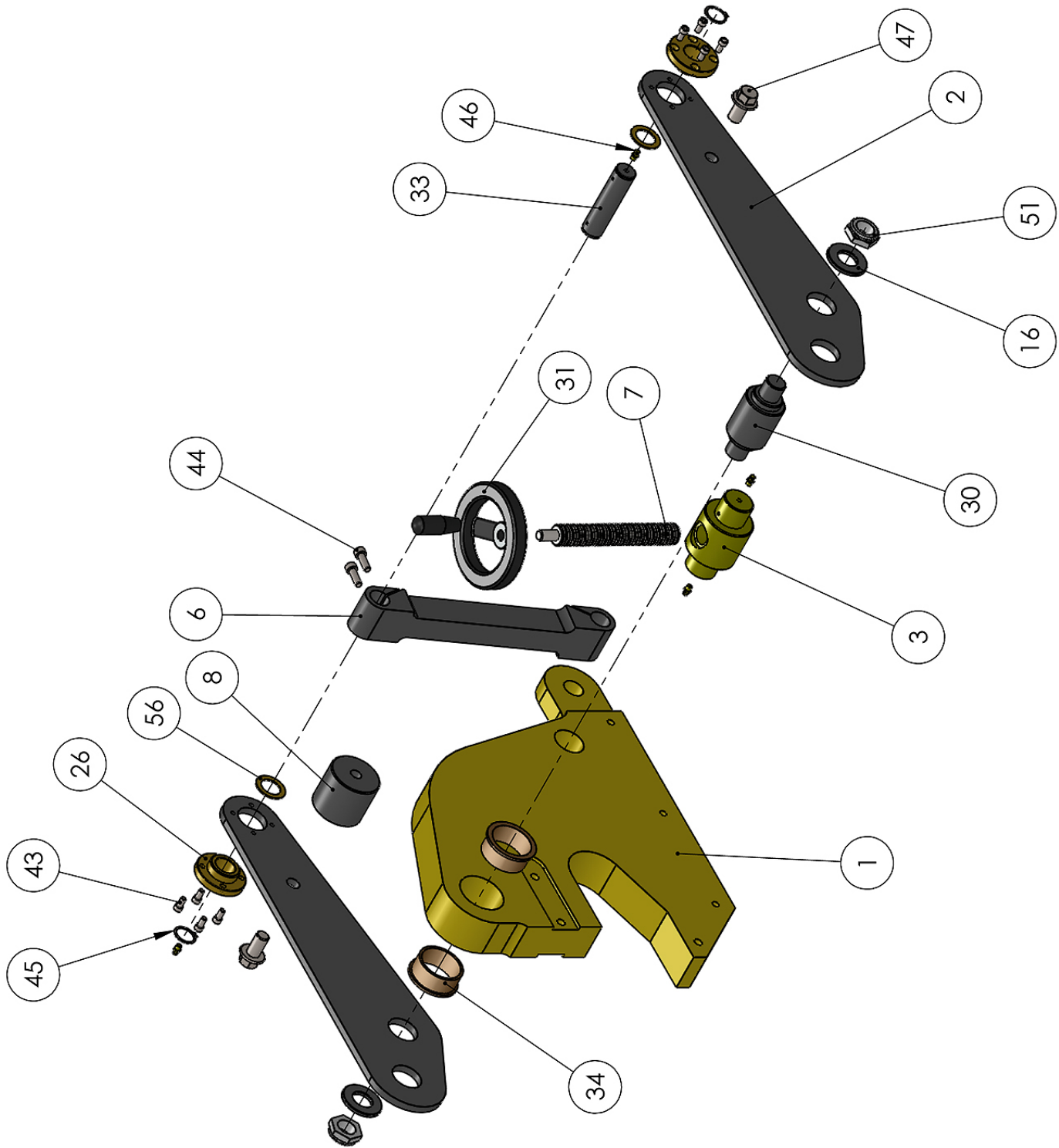
- Check daily for any unsafe conditions and fix immediately.
- Check that all nuts and bolts are properly tightened.
- On a weekly basis clean the machine and the area around it.
- Lubricate threaded components and sliding devices.
- Apply rust inhibitive lubricant to all non-painted surfaces.

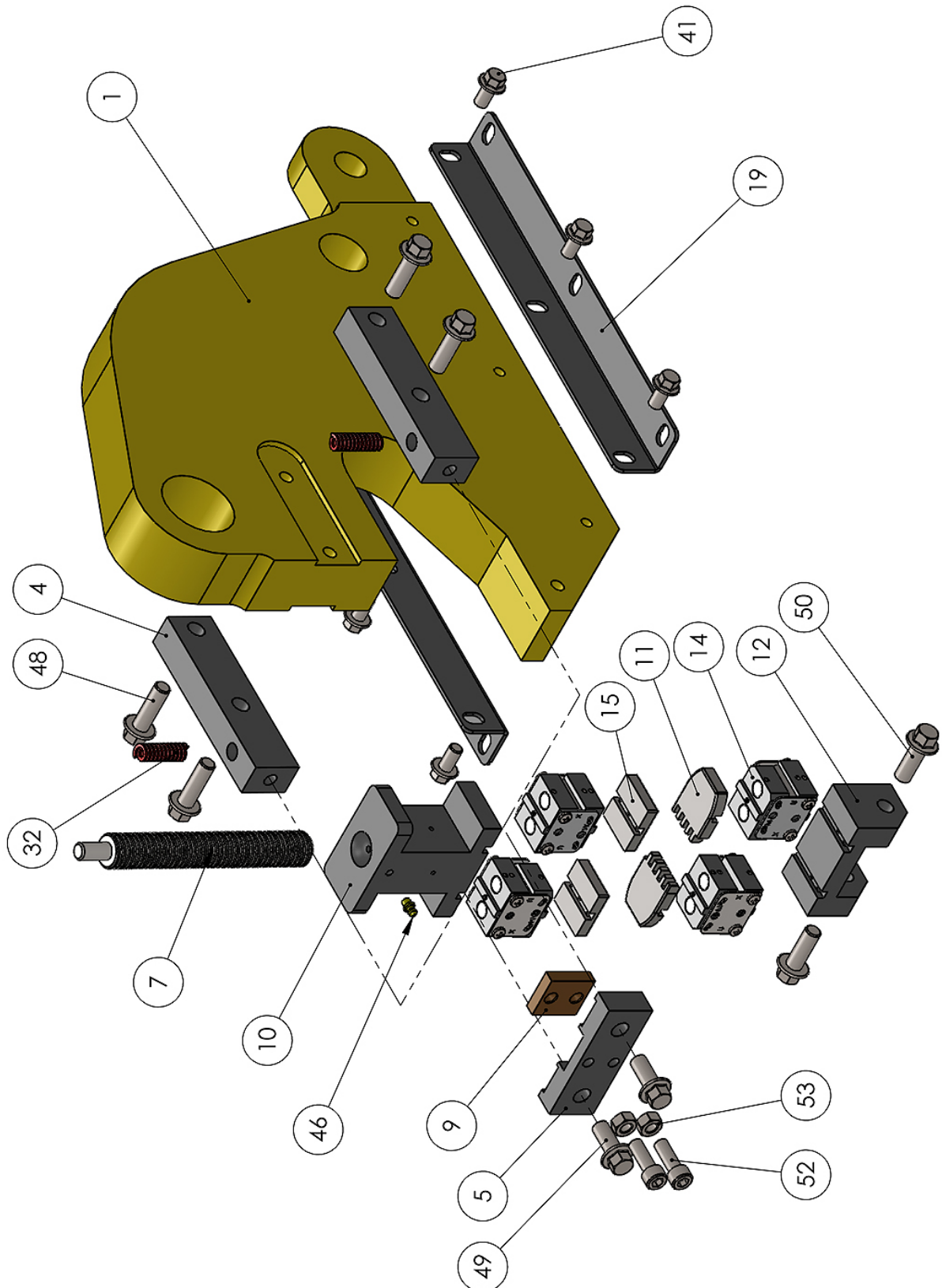


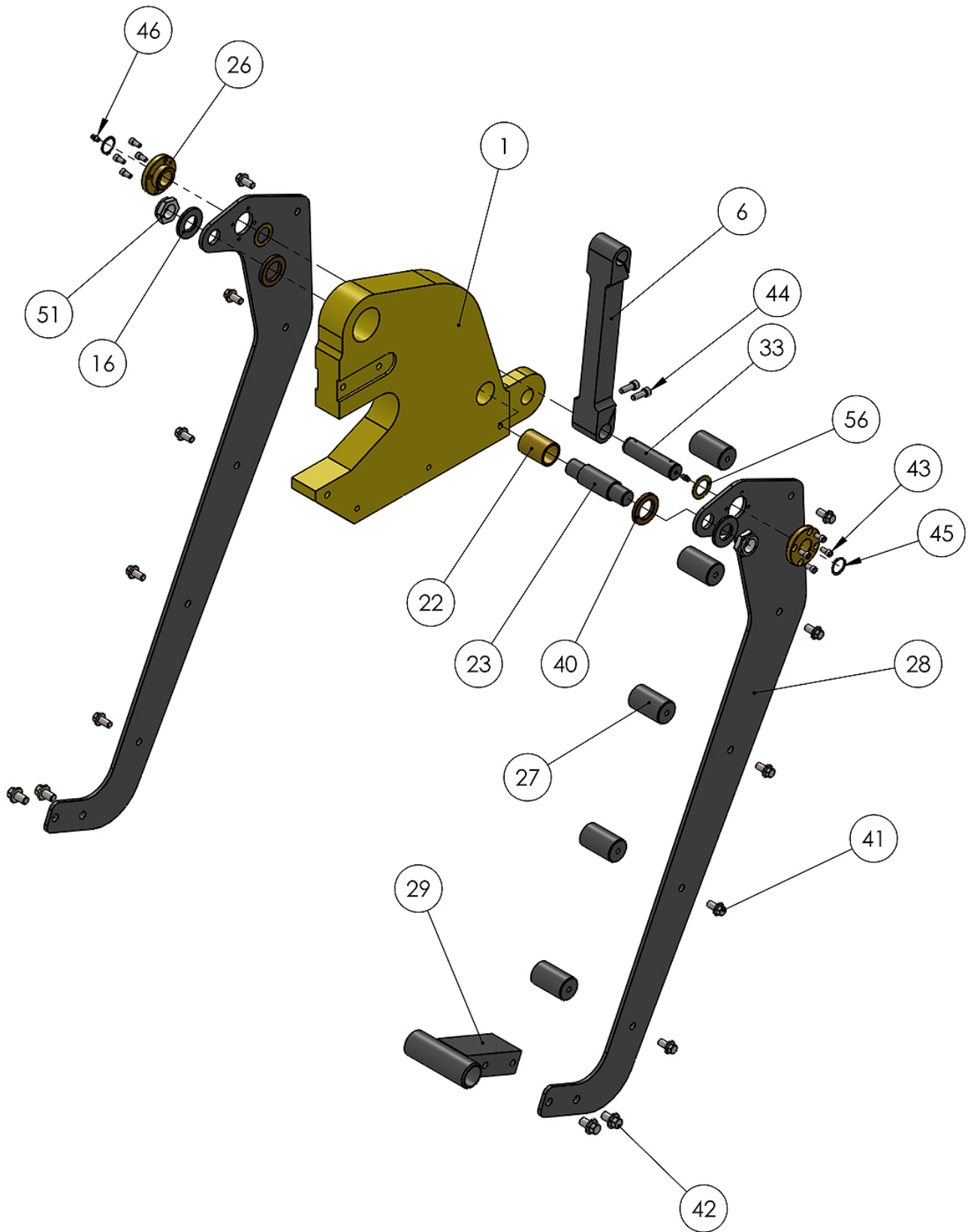
Note: *Proper maintenance can increase the life expectancy of your machine.*

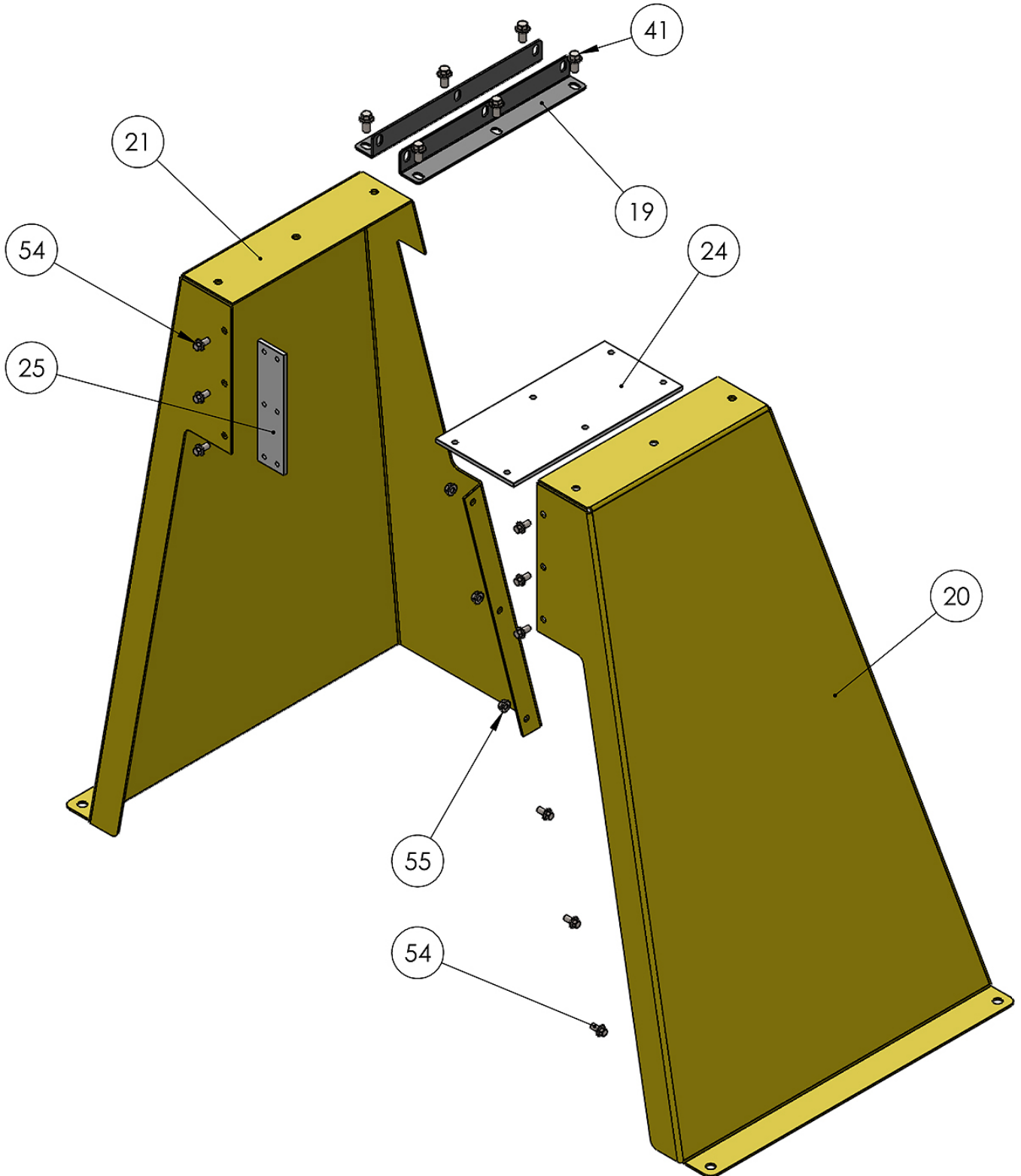


PARTS DIAGRAM











Parts List

Item	Part Number	Description	Qty.
1	ME-PS16-6A001	MAIN FRAME	1
2	MS16-6A001	MAIN LEVER	2
3	PS16-7A002	DRIVE SHAFT	1
4	ME-PS16-6A003	SUPPORT FINGER	2
5	ME-PS16-6A002	TIE BAR	1
6	MS16-6A005	CONNECTING ROD	1
7	PS16-7A009	ACTUATOR SCREW	1
8	ME-PS16-7A003	SPACER	1
9	PS16-6A006	SLIDE GIB	1
10	PS16-6A014	TOP MASTER DIE MOUNT	1
11	PS16-6A013-V2	JAW INSERT INTERLOCKING	2
12	PS16-6A005-v2	LOWER BASE PLATE	1
14		PS-16 TOOLING	4
15	PS16-6A013	JAW INSERT	2
16	PS16-7A011	SPECIAL WASHER	4
19	MS16-6A006	ANGLE BRACKET	2
20	MS16-6A010	SHRINKER STAND R.H.	1
21	MS16-6A009	SHRINKER STAND L.H.	1
22	PP-1537	1.25ID X 1.50OD X 2.0 BUSHING	1
23	MS16-7A001	ACTUATOR PIVOT PIN	1
24	MS16-6A002	SUPPORT PLATE	1
25	MS16-6A004	STAND CONNECTOR	1
26	MH19-7A051	END BUSHING	4
27	MS16-7A004	ACTUATOR SPACER	5
28	MS16-6A011	ACTUATOR LEVER	2
29	MS16-5A001	FOOT PAD ASSEMBLY	1
30	MS16-7A005	MAIN PIVOT PIN	1
31	PP-1033	5.0 HANDWHEEL	1
32	PP-1186	.5 X 1.5 SPRING	2
33	MS16-7A006	LINK PIN	2
34	PP-0295	FLANGED SLEEVE BEARING	2
40	MS16-7A007	THICK WASHER	2
41	M10 X 1.5 X 20	HEX FLANGE	22



42	M12 X 1.75 X 20	HEX FLANGE	4
43	1/4-20 X .50	SHCS	16
44	M8 X 1.25 X 25	SHCS	4
45	STD	1" EXT. RETAINING RING	4
46	STD.	STRAIGHT GREASE ZERK	7
47	M16 X 2.0 X 30	HEX FLANGE	2
48	M12 X 1.75 X 40	HEX FLANGE	4
49	M12 X 1.75 X 30	HEX FLANGE	2
50	M12 X 1.75 X 35	HEX FLANGE	2
51	STD.	1"-14 LOCK NUT	4
52	M10 X 1.5 X 30	SHCS	2
53	M10 X 1.5	HEX NUT	2
54	M8 X 1.25 X 14	HEX FLANGE	9
55	M8 X 1.25	FLANGE NUT	3
56	PP-0935	1.0 ID X 1.5 OD X .0625 THK	4



NOTES



NOTES



Distributed By



SYDNEY
(02) 9860 9111

MELBOURNE
(03) 9212 4422

BRISBANE
(07) 3715 2200

PERTH
(08) 9373 9999

www.machineryhouse.com.au

WARNING

General Machinery Safety Instructions

Machinery House
requires you to read this entire Manual before using this machine.

- 1. Read the entire Manual before starting machinery.** Machinery may cause serious injury if not correctly used.
- 2. Always use correct hearing protection when operating machinery.** Machinery noise may cause permanent hearing damage.
- 3. Machinery must never be used when tired, or under the influence of drugs or alcohol.** When running machinery you must be alert at all times.
- 4. Wear correct Clothing.** At all times remove all loose clothing, necklaces, rings, jewelry, etc. Long hair must be contained in a hair net. Non-slip protective footwear must be worn.
- 5. Always wear correct respirators around fumes or dust when operating machinery.** Machinery fumes & dust can cause serious respiratory illness. Dust extractors must be used where applicable.
- 6. Always wear correct safety glasses.** When machining you must use the correct eye protection to prevent injuring your eyes.
- 7. Keep work clean and make sure you have good lighting.** Cluttered and dark shadows may cause accidents.
- 8. Personnel must be properly trained or well supervised when operating machinery.** Make sure you have clear and safe understanding of the machine you are operating.
- 9. Keep children and visitors away.** Make sure children and visitors are at a safe distance for you work area.
- 10. Keep your workshop childproof.** Use padlocks, Turn off master power switches and remove start switch keys.
- 11. Never leave machine unattended.** Turn power off and wait till machine has come to a complete stop before leaving the machine unattended.
- 12. Make a safe working environment.** Do not use machine in a damp, wet area, or where flammable or noxious fumes may exist.
- 13. Disconnect main power before service machine.** Make sure power switch is in the off position before re-connecting.
- 14. Use correct amperage extension cords.** Undersized extension cords overheat and lose power. Replace extension cords if they become damaged.
- 15. Keep machine well maintained.** Keep blades sharp and clean for best and safest performance. Follow instructions when lubricating and changing accessories.
- 16. Keep machine well guarded.** Make sure guards on machine are in place and are all working correctly.
- 17. Do not overreach.** Keep proper footing and balance at all times.
- 18. Secure workpiece.** Use clamps or a vice to hold the workpiece where practical. Keeping the workpiece secure will free up your hand to operate the machine and will protect hand from injury.
- 19. Check machine over before operating.** Check machine for damaged parts, loose bolts, Keys and wrenches left on machine and any other conditions that may effect the machines operation. Repair and replace damaged parts.
- 20. Use recommended accessories.** Refer to instruction manual or ask correct service officer when using accessories. The use of improper accessories may cause the risk of injury.
- 21. Do not force machinery.** Work at the speed and capacity at which the machine or accessory was designed.
- 22. Use correct lifting practice.** Always use the correct lifting methods when using machinery. Incorrect lifting methods can cause serious injury.
- 23. Lock mobile bases.** Make sure any mobile bases are locked before using machine.
- 24. Allergic reactions.** Certain metal shavings and cutting fluids may cause an allergic reaction in people and animals, especially when cutting as the fumes can be inhaled. Make sure you know what type of metal and cutting fluid you will be exposed to and how to avoid contamination.
- 25. Call for help.** If at any time you experience difficulties, stop the machine and call you nearest branch service department for help.

WARNING

Shrinker Stretcher Safety Instructions

Machinery House
requires you to read this entire Manual before using this machine.

- 1. Maintenance.** Make sure all moving parts are locked down before any inspection, adjustment or maintenance is carried out.
- 2. Shrinker Stretcher Condition.** Shrinker Stretcher machine must be maintained for a proper working condition. Never operate a Shrinker Stretcher machine that has damaged or worn parts. Scheduled routine maintenance should be performed on a scheduled basis.
- 3. Hand Hazard.** Keep hands and fingers clear from moving parts. Serious injury can occur if hands or finger tips are placed between moving parts.
- 4. Gloves & Glasses.** Always wear leather gloves and approved safety glasses when using this machine.
- 5. Avoiding Entanglement.** Tie up long hair and use the correct hair nets to avoid any entanglement with the Shrinker Stretcher machine moving parts.
- 6. Understand the machine's controls.** Make sure you understand the use and operation of all controls.
- 7. Work area hazards.** Keep the area around the Shrinker Stretcher machine clean from oil, tools, chips. Pay attention to other persons in the area and know what is going on around the area to ensure unintended accidents.
- 8. Guards.** Do not operate this machine without the correct guards in place. Necessary guards protect you from moving parts.
- 9. Material condition.** Material must be clean from oil and dry. Oily material can slip.
- 10. Material hardness.** Make sure your hardness is the same throughout the material, we recommend that you use certified material. Never use hardened steel, glass or fragile material on this machine.
- 11. Level machine.** Level the machine on a flat concrete surface by using a spirit level and secure with to floor.
- 12. Feeding material.** Shrinking or Stretching a tight radius in one pass is not possible. So you need several passes before you can achieve a certain radius.
- 13. Call for help.** If at any time you experience difficulties, stop the machine and call your nearest branch service department for help.

PLANT SAFETY PROGRAM

NEW MACHINERY HAZARD IDENTIFICATION, ASSESSMENT & CONTROL

Shrinker Stretcher

Developed in Co-operation Between A.W.I.S.A and Australia Chamber of Manufactures
 This program is based upon the Safe Work Australia, Code of Practice - Managing Risks of Plant in the Workplace (WHSA 2011 No10)



Item No.	Hazard Identification	Hazard Assessment	Risk Control Strategies <small>(Recommended for Purchase / Buyer / User)</small>
B	CRUSHING	LOW	Secure & support work material. Ensure machine is bolted down.
C	CUTTING, STABBING, PUNCTURING	MEDIUM	Wear gloves to prevent cuts from sharp material.
D	SHEARING	MEDIUM	Keep hands clear from moving parts.
Plant Safety Program to be read in conjunction with manufactures instructions			



www.machineryhouse.com.au



www.machineryhouse.co.nz

Authorised and signed by:
 Safety officer: 
 Manager: 

Revised Date: 12th March 2012