

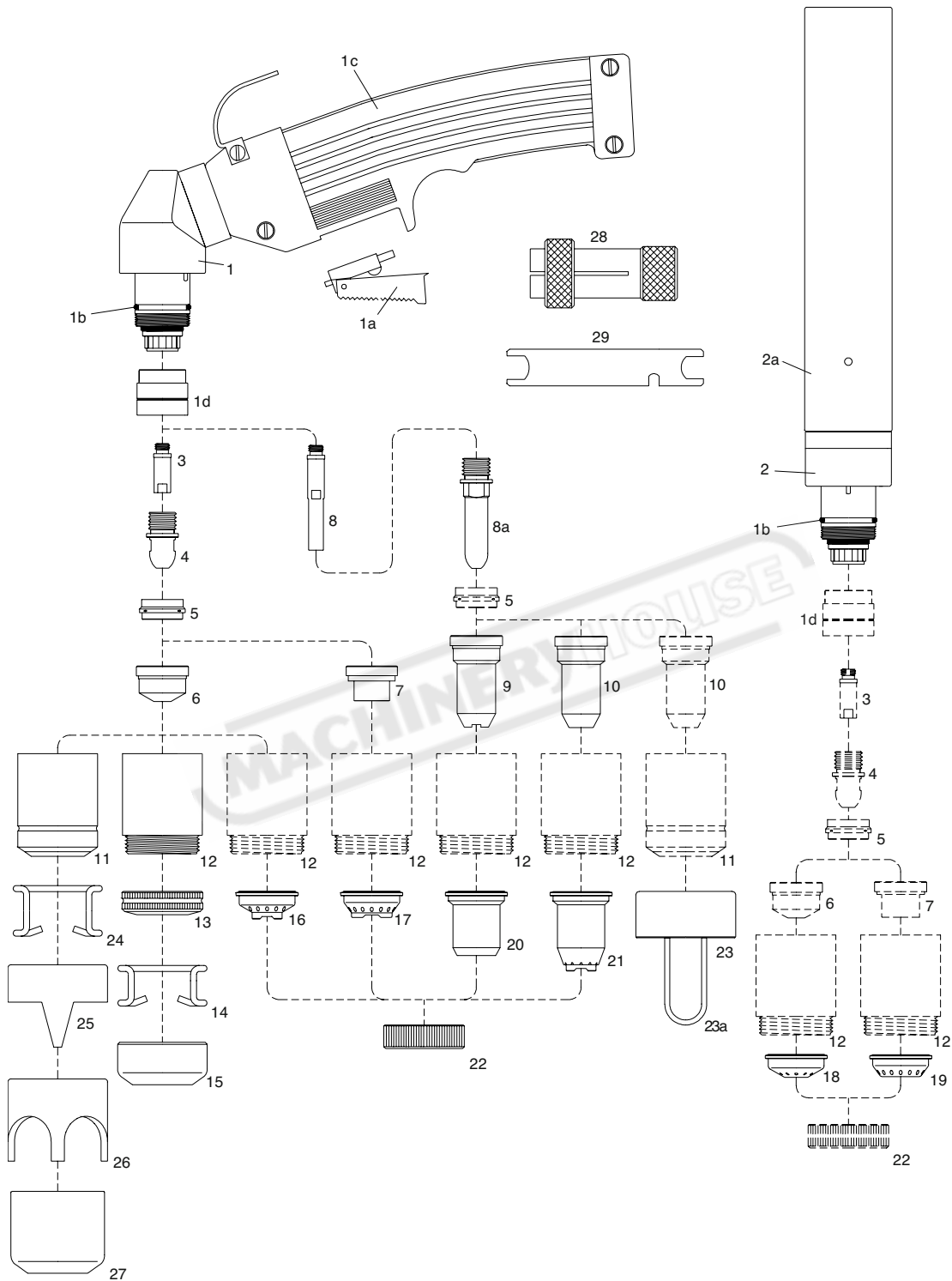
PLASMA CUTTING TORCHES

T100 Plasma Torch & Spares

Air Cooled 100 Amp



UNIMIG



Technical Data

Max Current:	150A	Gas Pressure:	5.5 Bar	Security System:	Electrical
Duty Cycle:	60%	Gas Flow:	220l/min	Post Flow Time:	90 seconds
Gas Supply:	Air	Arc Ignition:	HF		

PLASMA CUTTING TORCHES

T100 Plasma Torch & Spares

Air Cooled 100 Amp



Spare Parts

Item	WGA Part No.	Description
	01252	Hand torch complete with 6 mts cable (central connector)
	01352	Hand torch complete with 12 mts cable (central connector)
	01452	Machine torch complete with 6 mts cable (central connector)
	01552	Machine torch complete with 12 mts cable (central connector)
1	01200	Hand torch head
1a	07301.20	Switch
1b	02000.60	O - Ring
1c	07301	Handgrip complete with switch
1d	60085	Front insulator
2	01400	Machine torch head
2a	03310	Machine handle
3	06004	Diffusor
4	52540	Electrode
5	60020	Swirl ring
6	51140/S	Tip long life ø 1,10
	51141/S	Tip long life ø 1,35
	51142/S	Tip long life ø 1,60
	51144.24	Gouging tip ø 2,4
7	51410	Contact tip ø 1,35
	51411	Contact tip ø 1,6
8	06005	Extended diffusor
8a	52549	Extended electrode
9	51148	Extended tip (for contact cutting max. 50A)
10	51148.13	Extended tip ø 1,35 - 90A - (for 51958 + 51959 or 60380)
	51148.16	Extended tip ø 1,6 - 120A - (for 51958 + 51959 or 60380)
11	60328	Nozzle retaining cap
12	60348	Contact nozzle retaining cap
	60348/V	Contact nozzle retaining cap, Max.life
13	51952	Spring holder protection nut
14	51911	Spacer spring for code 51952
15	51953	Gouging spacer
16	51950	Spacer for contact cutting, hand
17	51930	Spacer for contact cutting, hand
18	51951	Shield cup, machine
19	51935	Shield cup, machine
20	51957	Shield cup, hand (max. 50A)
21	51958	Spacer for contact cutting, hand
22	51959	Locking nut
23	60380	Spacer complete with springs
23a	60381	Spare springs
24	51910	Spacer spring
25	60370	Double pointed spacer
26	60371	Crown spacer
27	60373	Gouging spacer
	04241	Air and power cable 6 mts 1/8" - Hand torch
	04251	Air and power cable 12 mts 1/8" - Hand torch
	04321	Air and power cable 6 mts 1/8" - Machine torch
	04331	Air and power cable 12 mts 1/8" - Machine torch
	04260-EWS	Central connector torch side
	04265-EWS	Central connector machine side
28	60369	Extractor for swirl ring
29	60368	Wrench for electrode



PLASMA CUTTING TORCHES

T150 Plasma Torch & Spares

Air Cooled 150 Amp



Spare Parts

Item	WGA Part No.	Description
	04050/CS	Hand torch complete with 6 mts cable (1/8" connection)
	04051/CS	Hand torch complete with 6 mts cable (central connector)
	04151/CS	Hand torch complete with 12 mts cable (central connector)
	04400/S	Machine torch complete with 6 mts cable (1/8" connection)
	04401/S	Machine torch complete with 6 mts cable (central connector)
	04501/S	Machine torch complete with 12 mts cable (central connector)
1	02000	Hand torch head
1a	04280/C	Handgrip with microswitch
1b	02000.60	O - Ring
1c	60080	Front insulator
2	04300	Machine torch head
2a	03310	Machine handle
3	05004	Diffusor
4	52540	Electrode
5	60020	Swirl ring
6	51140/S	Tip long life ø 1,1
	51141/S	Tip long life ø 1,35
	51142/S	Tip long life ø 1,6
	51143/S	Tip long life ø 1,8
	51144	Gouging tip ø 3,0
7	51410	Contact tip ø 1,35
	51411	Contact tip ø 1,6
	51412	Contact tip ø 1,8
8	05005	Extended Diffusor
8a	52549	Extended electrode
9	51148	Contact extended tip max. 50A
10	51148.13	Extended tip ø 1,35 - 90A
	51148.16	Extended tip ø 1,6 - 120A
	51148.18	Extended tip ø 1,8 - 150A
11	60330	Nozzle retaining cap
12	60350	Contact nozzle retaining cap,
	60350/V	Contact nozzle retaining cap, Max.life
13	51952	Spring holder protection nut
14	51911	Spacer spring for code 51952
15	51953	Gouging spacer
16	51950	Spacer for contact cutting, hand
17	51930	Spacer for contact cutting, hand
17a	51920	Spacer for contact cutting, hand
18	51951	Shield cup, machine
19	51935	Shield cup, machine
19a	51925	Shield cup, machine
20	51957	Shield cup, hand (max. 50A)
21	51958	Spacer for contact cutting, hand
22	51974	Spacer for extended tips High Amp
23	51959	Locking nut
24	60380	Spacer complete with springs
24a	60381	Spare springs
25	51910	Spacer spring
26	60370	Double pointed spacer
27	60371	Crown spacer
28	60373	Gouging spacer
29	60369	Extractor for swirl ring
30	60368	Wrench for electrode
	04240	Air and power cable 6 mts 1/8" - Hand torch
	04250	Air and power cable 12 mts 1/8" - Hand torch
	04320	Air and power cable 6 mts 1/8" - Machine torch
	04330	Air and power cable 12 mts 1/8" - Machine torch



SPARE PARTS IDENTIFICATION - KUPJR55

Description		Part Number	
1	TOP BOARD5	B01012	10000148
		B01154	10000212
2	CENTER BOARD	B02004	10000282
3	BOTTOM BOARD	B03004	B03039
		B03081	10000389
		10000409	10000439
4	LOW VOLTAGE PCB	B04010	10000510
5	HF PCB	B06099	10 000 860
6	PTC PILOT ARC BOARD	B06013	10000860
7	COVER	J03049	10012095
8	FRONT PANEL	J02130	10011603
9	RUBBER FEET	J24010	10016489
10	POTENTIOMETER FOR CURRENT ADJUSTMENT	D15101	10006505
11	EURO PALSMA FITTING MACHINE END	C02020	10004622
12	DIGITAL METER	D20021	10006787
13	KNOB	C14001	10004904
14	FAN MOTOR	D28075	10007325
15	FAN GRILL	D29003	10007332
16	HANDLE	J24005	10016483
17	DINSE CONNECTOR	C02066	10004638
	CABLE PLASTIC COUPLER	C13010	10004891
	POWER SUPPLY CABLE	B11035	10001411
	BASE PLATE	J01023	10011308
19	AIR PRESSURE SWITCH	C15009	10004929
20	GAS SOLENOID VALVE	D27009	10007271
21	OHM RESISTOR 50 WATTS		10005292
22	MAIN SWITCH		10004925



SPARE PARTS IDENTIFICATION - KUPJR55

