

RPCVM15 Carvers Mallet

- Weighing 15oz. Suitable for delicate work as well as for heavier operations such as roughing out
- Close grained beech



RECORD POWER
ESTABLISHED 1908

CODE	ex GST	inc GST
R9703	\$54	\$59.40

WCV-130 Carvers Vice

- The vice can be securely attached to any work surface up to 4" thick
- Cast iron clamp jaws provides great holding power for heavy use
- Faceplate revolves 360°
- Pivoting support arm



CODE	ex GST	inc GST
W310	\$65	\$71.50

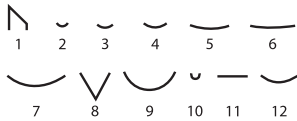
RPCV12A Carving Tool Set

This superb value set contains a wide range of profiles, providing an ideal introduction to the fascinating world of wood carving.

Spring Alloy Steel This material helps the chisels retain their cutting edge longer and resists corrosion.

Included DVD features: Record Power Sweep Reference Chart

- Tool Talk
- Projects
- Tips & tools
- Timber selection
- Sharpening & maintenance
- The significant six techniques
- 16 page colour project booklet



CODE	ex GST	inc GST
R9701	\$150	\$165

RECORD POWER
ESTABLISHED 1908

WHG-6 - Digital Height Gauge



- Digital reading in mm, inches and fractions
- Horiz / Vert. measuring
- 0.2mm accuracy
- 0-150mm measuring range
- Hardened steel measuring/scraper jaw
- Auto on when you slide head
- Magnets in base



CODE	ex GST	inc GST
W643	\$36	\$39.60

MM-50 - Digital Moisture Meter

- Measures the moisture in wood 5 - 50%
- Measures the moisture in building material 1.5 - 33%
- Measuring accuracy: ±2%
- Backlit LCD screen
- Lid cover used for calibration
- Auto power off: 3 minutes inactive
- Low battery indicator: <7V
- Includes 9V battery



CODE	ex GST	inc GST
W6455	\$40	\$44

WHG-3U - Saw Blade & Router Setting Gauge



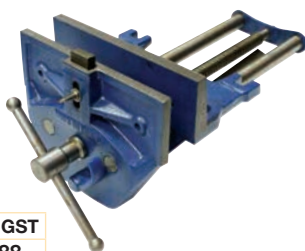
- Digital reading in mm, inches and fractions
- Hole depth measuring 50.8mm
- 0-80mm measuring range
- Horiz / Vert. measuring
- 0.1mm accuracy
- 60mm wide aperture
- Magnets in base



CODE	ex GST	inc GST
W644	\$30	\$33

Wood Working Vices

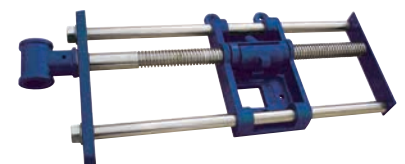
- Quick release mechanism
- Polished guide rods
- Acme screw
- Sliding stop dog
- Cast iron construction



Jaw Width	Opening	CODE	ex GST	inc GST
178mm	203mm	V187	\$80	\$88
230mm	260mm	V184	\$120	\$132

Front Mount Wood Working Vice

- Quick release mechanism
- Polished guide rods
- Acme screw
- Cast iron construction
- Note: Timber vice jaws and handle are not included



Jaw Width	Opening	CODE	ex GST	inc GST
265mm	330mm	V189	\$75	\$82.50