

SPARE PARTS SECTION

INDUSTRIAL PEDESTAL DRILL

Model. PD-35

240V Order Code D162
415V Order Code D161

EDITION No : PD-35 -1
DATE OF ISSUE : 07/2023

The following section covers the spare parts diagrams and lists that were current at the time this manual was originally printed. Due to continuous improvements of the machine, changes may be made at any time without notification.

HOW TO ORDER SPARE PARTS

1. Have your machines model number, serial number & date of manufacture on hand, these can be found on the specification plate mounted on the machine
2. A scanned copy of your parts list/diagram with required spare part/s identified.

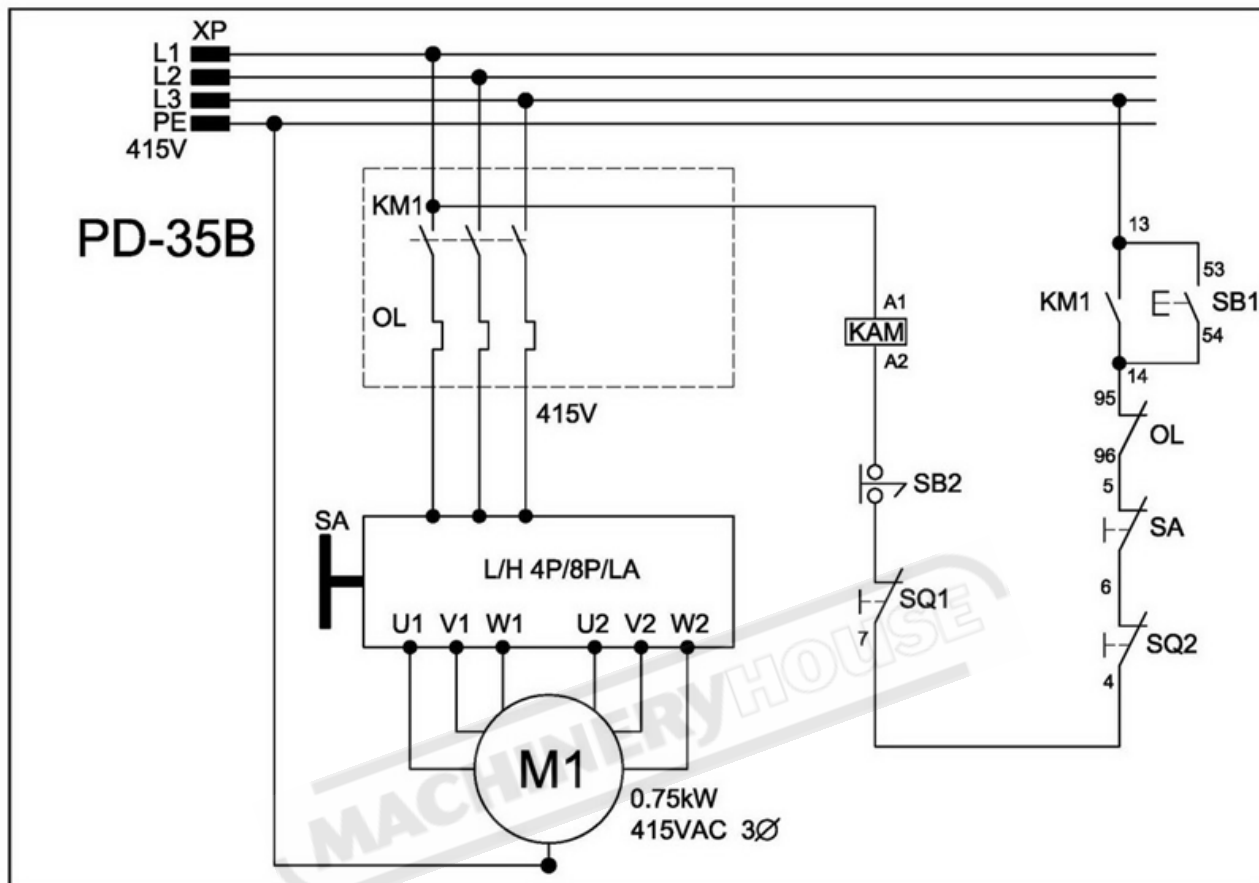
NOTE: SOME PARTS MAY ONLY BE AVAILABLE AS AN ASSEMBLY

3. Go to www.machineryhouse.com.au/contactus and fill out the inquiry form attaching a copy of scanned parts list.



WARNING

The machine is the sole responsibility of the owner for its safe use. This responsibility includes but is not limited to proper installation in a safe environment, personnel training, proper inspection and maintenance, manual availability and comprehension. The manufacturer will not be held liable for injury or property damage from negligence, improper training, machine modifications or misuse.

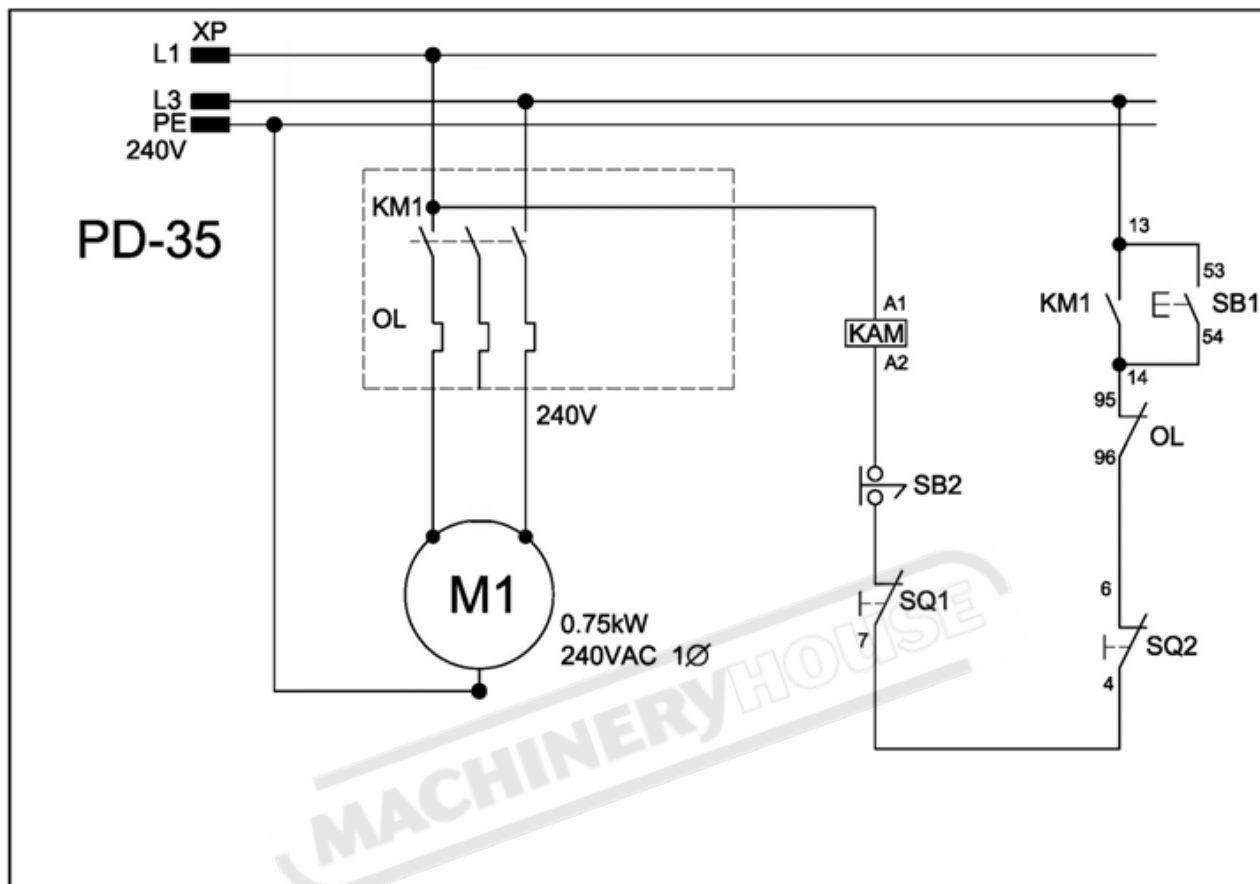
PD-35B ELECTRICAL DIAGRAM

PD-35B ELECTRICAL PARTS LIST

Part No.	Component/Object	Type/Model	Ratings/Technical Data	Pcs	Part NO.
M1	Motor	PD-35B	0.75kW/415V 50Hz/3PH	1	68
KM1	Magnetic Contactor	MP-09D (MA-09)	415V/15A	1	108D
OL	Series Overload Relay	RA-20/2.7A	2.7A-4.4A	1	108D
SQ1	Micro Switch Cover Guard	VM5-00N	5A/250S	1	92
SQ2	Micro Switch Chuck Guard	VM5-00N	5A/250S	1	101Z
SB1	Push Button	MP-09D	415V/15A	1	108D
SB2	Emergency stop	A2-RPR01R	AC 600V / 3A	1	104Z
SA	Can Switch	AC-22A	AC600V 16A	1	78


WARNING!

*Electricity is dangerous and could cause death
All electrical work must be carried out by a qualified electrician.*

PD-35 ELECTRICAL DIAGRAM



PD-35 ELECTRICAL PARTS LIST

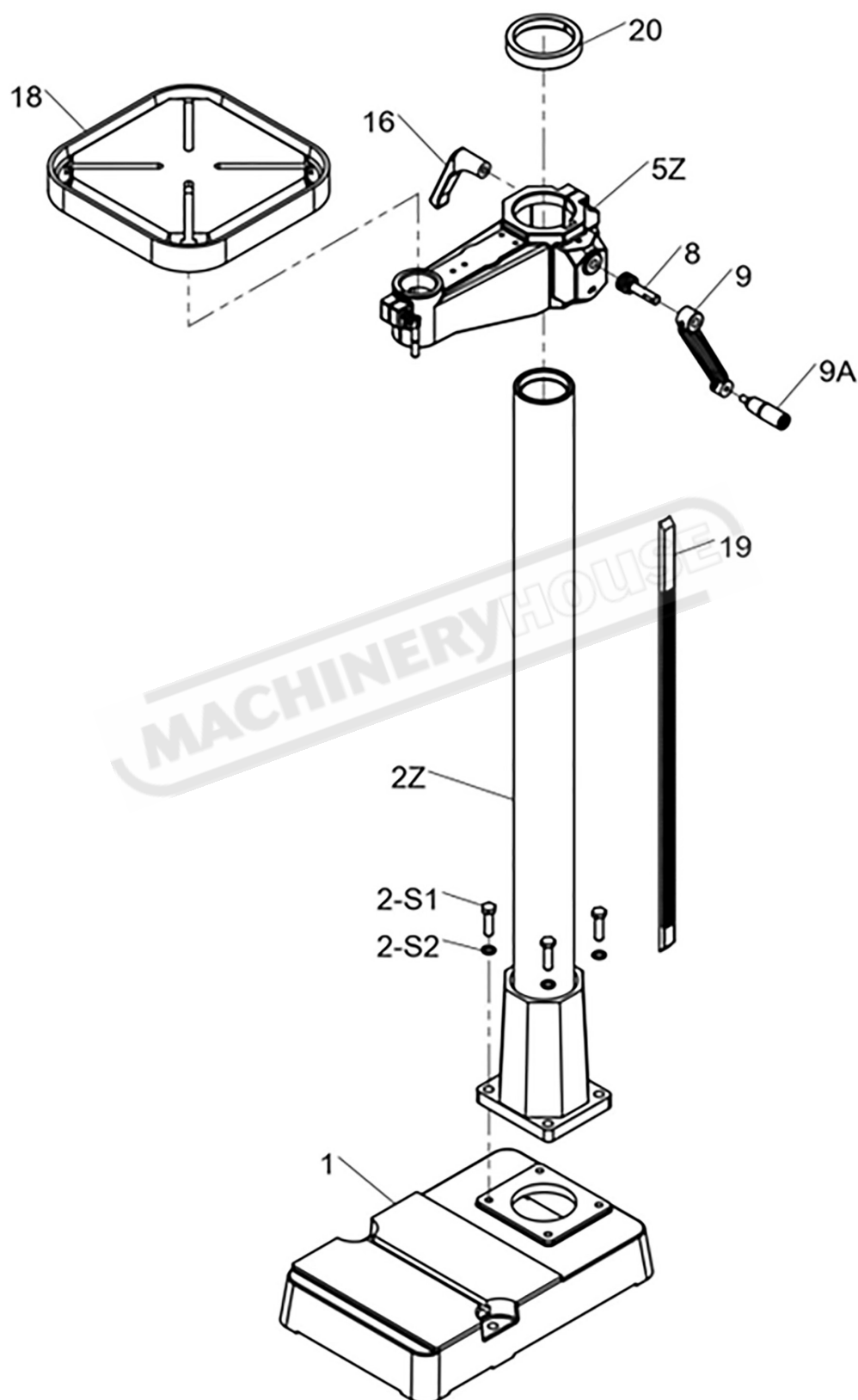
Part No.	Component/Object	Type/Model	Ratings/Technical Data	Pcs	Part NO.
M1	Motor	PD-35	0.75kW/240V 50Hz/1PH	1	68
KM1	Magnetic Contactor	MP-09D (MA-09)	240V/15A	1	108D
OL	Series Overload Relay	RA-20/6.5A	5A-8A	1	108D
SQ1	Micro Switch Cover Guard	VM5-00N	5A/250S	1	92
SQ2	Micro Switch Chuck Guard	VM5-00N	5A/250S	1	101Z
SB1	Push Button	MP-09D	240V/15A	1	108D
SB2	Emergency stop	A2-RPR01R	AC 250V / 3A	1	104



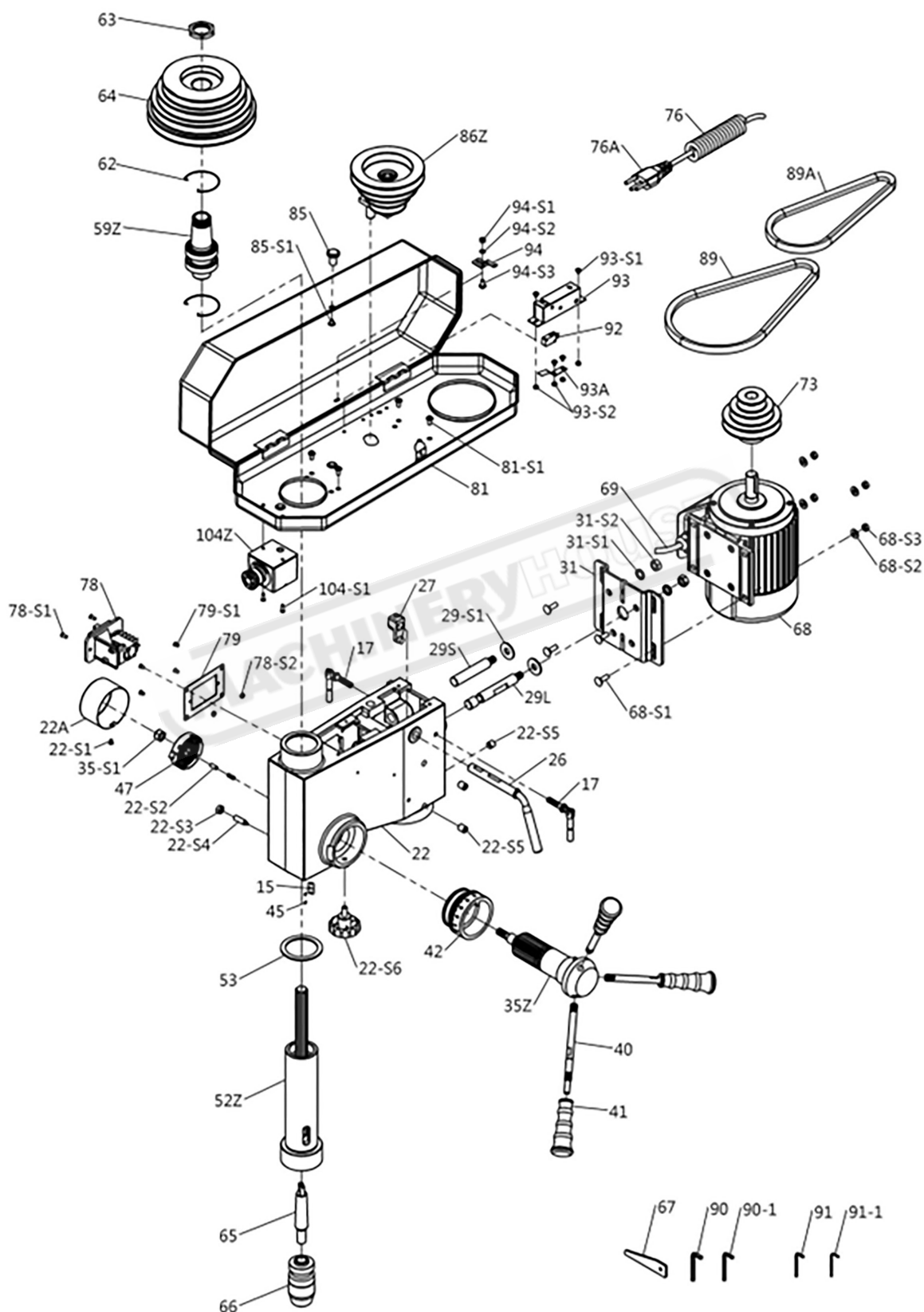
WARNING

Always disconnect the power to the machine before servicing or doing maintenance to the machine.

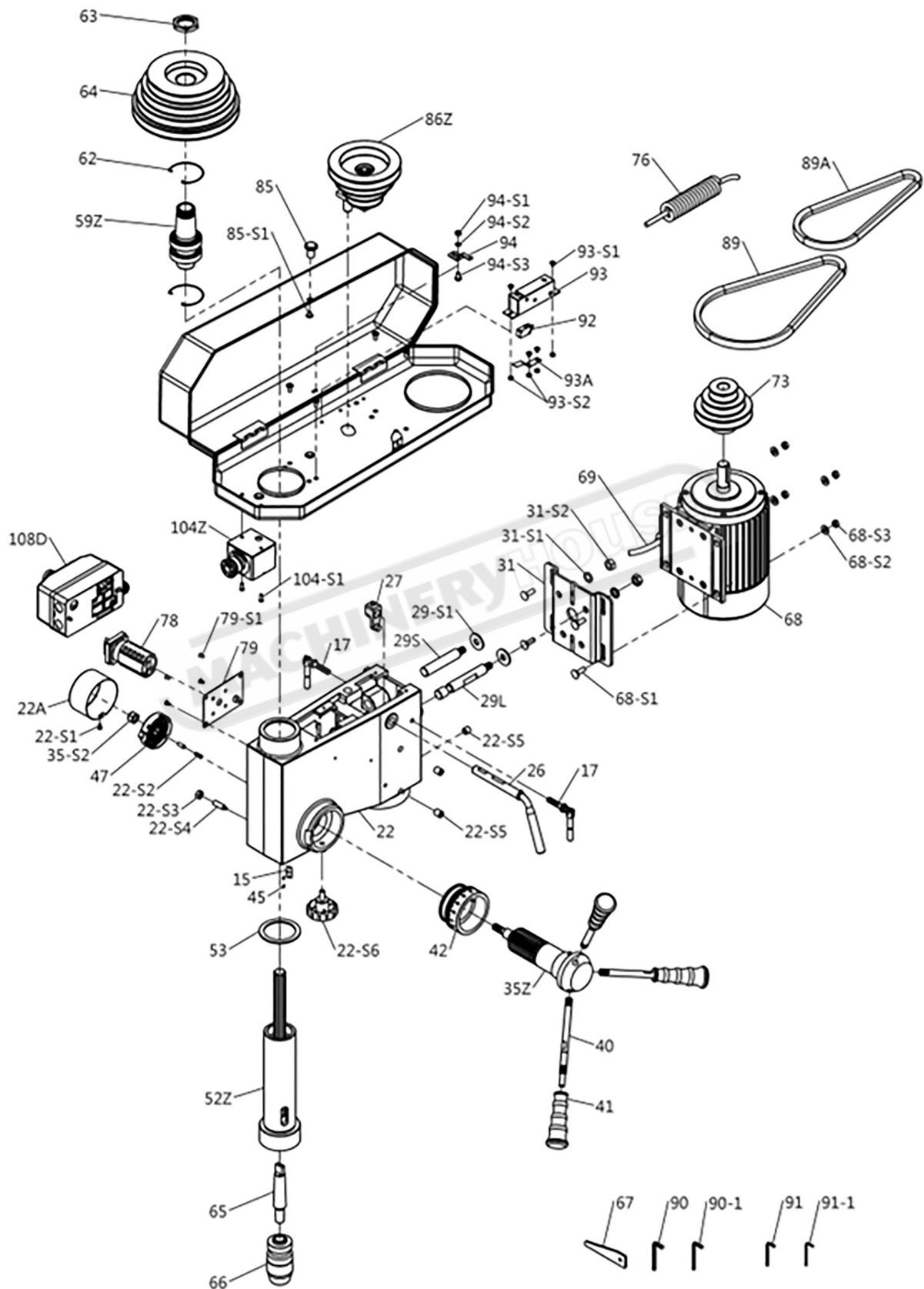
PD-35/35B PARTS DIAGRAM



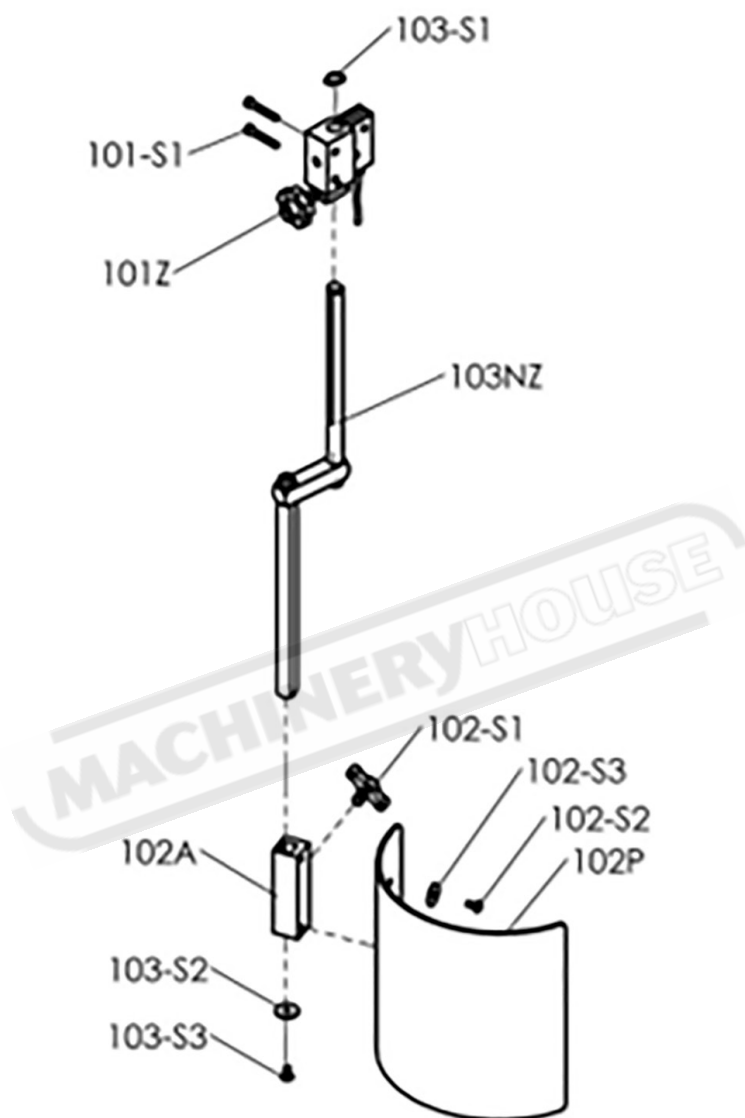
PD-35 PARTS DIAGRAM



PD-35B PARTS DIAGRAM



PD-35/35B SAFETY GUARD PARTS DIAGRAM



NOTE: SOME INDIVIDUAL PARTS MAY ONLY BE AVAILABLE AS AN ASSEMBLY

PD-35/PD-35B SPARE PARTS LIST

1	Base	47	Spring Cap
2Z	Column Set	52Z	Quill Set
2-S1	Bolt	53	Rubber Washer
2-S2	Spring Washer	59Z	Spindle Sleeve Set
5Z	Table Bracket Set	62	Snap Ring
8	Worm Gear	63	Pulley Nut
9	Table Handle	64	Spindle Pulley
9A	Handle Bolt	65	Taper Arbor (Option)
15	Indicator	66	Drill Chuck (Option)
16	Clamp Handle	67	Drill Shifter
17	Lead Bolt	68	Motor
18	Table	68-S1	Bolt
19	Rack	68-S2	Washer
20	Rack Ring	68-S3	Hex Nut
20A	Rack Ring	69	Motor Wire
22	Head Body	73	Motor Pulley
22A	Spring Protection Cover	76	Wire
22-S1	Screw	76A	Wire Plug
22-S2	Pin	78	NVR Switch(PD-28/35)
22-S3	Hex Nut	78	Cam Switch(PD-35B)
22-S4	Screw	78-S1	Screw
22-S5	Screw	78-S2	Washer
22-S6	Lead Bolt	79	Switch Cover
26	Shifter Bar	79-S1	Screw
27	Shifter	81	Pulley Cover
29L	Slide Bar (L)	81-S1	Screw
29S	Slide Bar (S)	85	Pulley Cover Knob
29-S1	Washer	85-S1	Screw
31	Motor Base	86Z	Pulley Shaft Set
31-S1	Spring Washer	89	V-BELT
31-S2	Hex Nut	89A	V-BELT
35Z	Feed Shaft Set	90	Hex Wrench
35-S1	Hex Nut	90-1	Hex Wrench
38	Key	91	Hex Wrench
40	Feed Handle	91-1	Hex Wrench
41	Grip	92	Micro Switch
42	Scale Ring	93	Micro Switch Box
44	Indicator	93A	Spring Sheet
45	Rivet	93-S1	Screw

PD-35/PD-35B SPARE PARTS LIST

93-S2	Hex Nut
94	Clutch
94-S1	Hex Nut
94-S2	Spring Washer
94-S3	Screw
101D	Micro Switch Base
101Z	Micro Switch Bracket Set
101-S1	Screw
101-S2	Screw
102P	Safety Guard
102S	Safety Guard
102SZ	Safety Guard Set
102A	Safety Guard Slide
102-S1	Lead Bolt
102-S2	Screw
102-S3	Washer
103IZ	Bracket Rod Set
103NZ	Bracket Rod Set
103-S1	C-Ring
103-S2	Washer

103-S3	Screw
104Z	Emergency Stop Switch Set
104-S1	Screw
108D	Magnetic Switch
108-S1	Screw

NOTE: SOME INDIVIDUAL PARTS MAY ONLY BE AVAILABLE AS AN ASSEMBLY