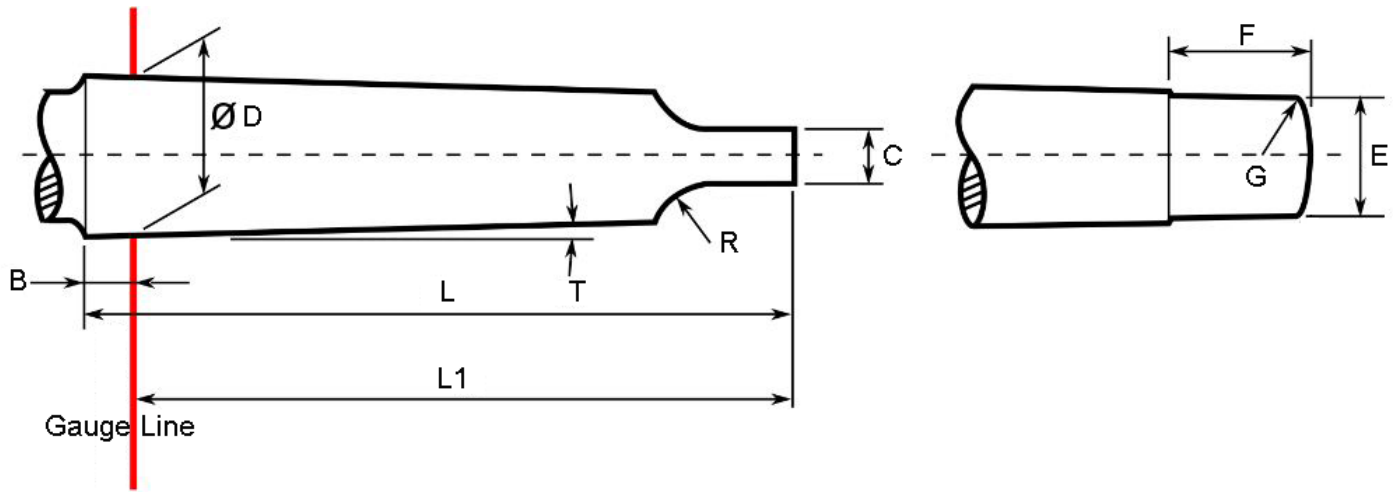


# MORSE TAPERS



Morse Taper	Taper	D	L1	L	R	H	B	T	F	E	G
1MT	20.047:1	12.065	62	65.5	5	3.5	5.2	1°29'27"	13.5	8.7	1.2
2MT	20.020:1	17.78	75	80	6	5	6.3	1°25'50"	16	13.5	1.6
3MT	19.922:1	23.825	94	99	7	5	7.9	1°26'16"	20	18.5	2
4MT	19.254:1	31.267	117.5	124	8	6.5	11.9	1°29'15"	24	24.5	2.5
5MT	19.002:1	44.399	149.5	156	10	6.6	15.9	1°30'26"	29	37.5	3
6MT	19.180:1	63.348	210	218	13	8	19	1°29'36"	40	51	4