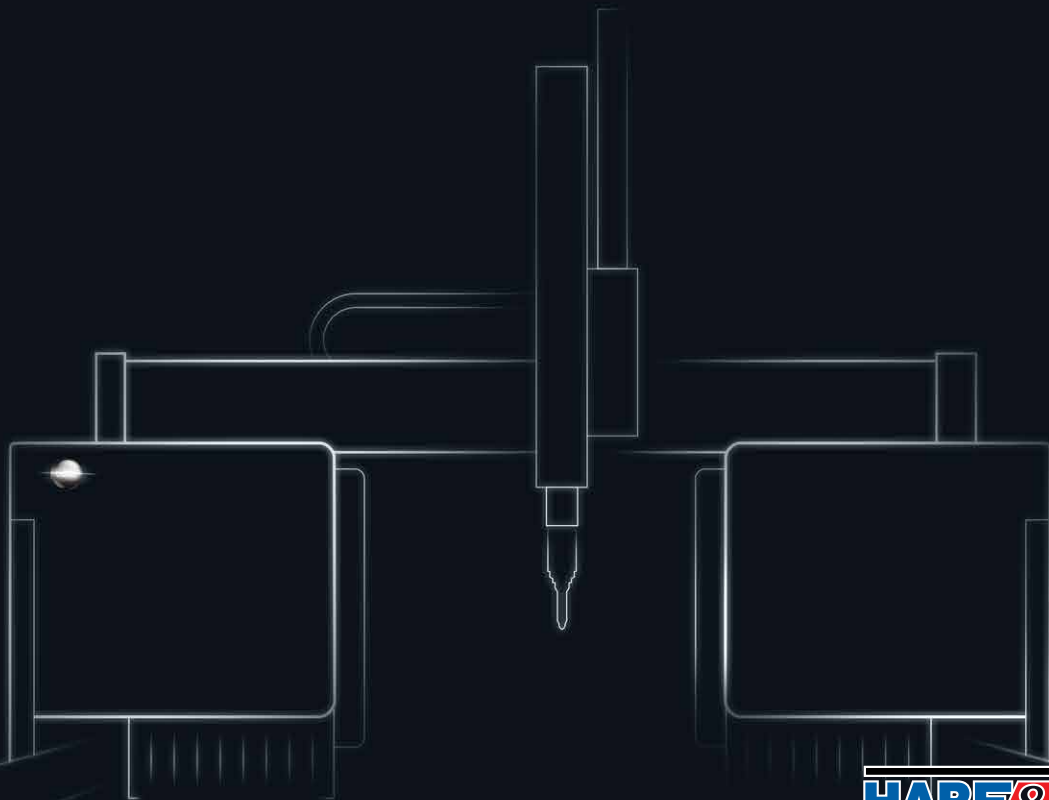


# U Series

Multi-tasking Laser Cutting Machine



**HARE & FORBES**  
**MACHINERYHOUSE**

Australian Distributors

**Hare & Forbes**  
**Machineryhouse**  
Sydney - Melbourne  
Adelaide - Brisbane - Perth

Ph: 1300 202 200

**5** Years of  
Warranty

WORLD  
**NO.1**  
FOR 5 YEARS  
IN A ROW

**bodor**

# Bodor U10, Multi-tasking Laser Cutting Machine

Experience versatile cutting for different applications. Let U10 simplify your metal profiles, sheets, and tubes fabrication with intelligent, intuitive operation designed for maximum efficiency.



Tube cutting section  
**φ100mm-φ1200mm**

Sheet metal cutting section  
**3200mm×28000mm**

## All-in-one Processing, The Ultimate Steel Solution



### COVERING ALL CUTTING NEEDS

The Bodor U10 offers unmatched versatility by combining sheets, tubes, and profiles processing in a single machine. This all-in-one solution reduces the need for multiple machines, significantly lowering your equipment costs.



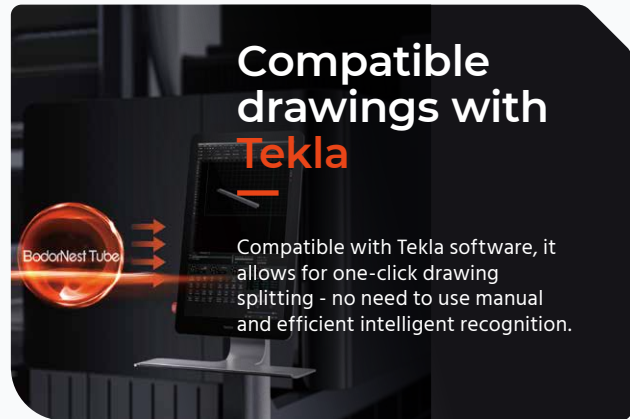
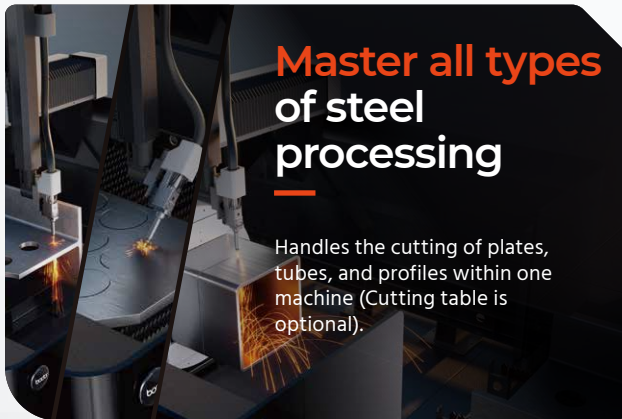
### MAXIMIZING EFFICIENCY

With its loading multiple materials capabilities and cyclic processing, the U10 is designed to keep your operation running continuously. This means less downtime during cutting, loading, and unloading, ensuring maximum efficiency for your business.

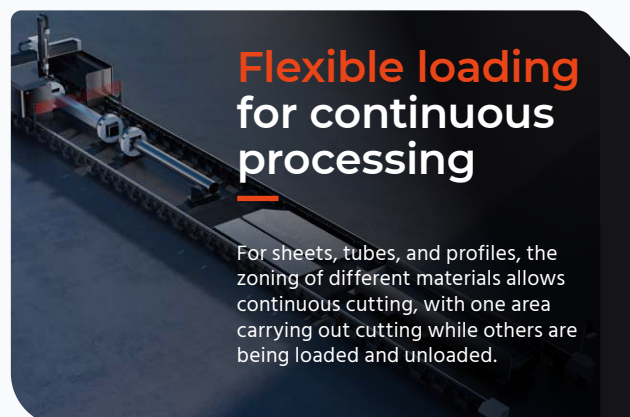
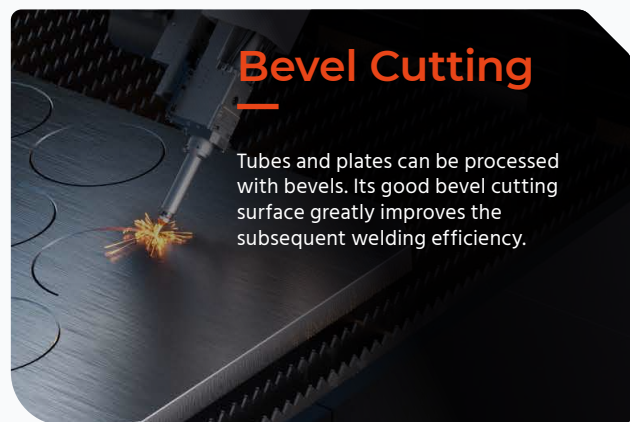


### SIMPLIFYING PRODUCTION

Advanced functions such as notch cutting, beveling, automatic path adjustment of the laser head, and hands-free drawing splitting can save multiple processing steps, simplify production, and reduce cutting and labor costs.



\* Certain functions or components mentioned in this document are optional and may not be included in the standard version of the product.



## Technical specifications

## U10

### LASER POWER

12kW / 20kW

### MATERIAL SIZE RANGE

Structural steel: 100mm×100mm-1500mm×600mm

Sheet metal: 3200mm×28000mm

Round tube metal:  $\phi$ 100mm- $\phi$ 1200mm

Round and square tube metal: 200mm-850mm

### MAX. TUBE LENGTH

≤28000mm

### MAXIMUM MATERIAL WEIGHT

Structural steel: 6T

Sheet metal: 375Kg/m<sup>2</sup>

Round tube metal: 9T

Round and square tube metal: 6T

### EQUIPMENT DIMENSIONS

33900mm×5030mm×4100mm

### OVERALL WEIGHT

10500kg

### MAX. LINKAGE SPEED OF X AND Y AXES

50m/min

### MAX. ACCELERATION

0.5G

### TUBE CUTTING MACHINE BEVEL CUTTING

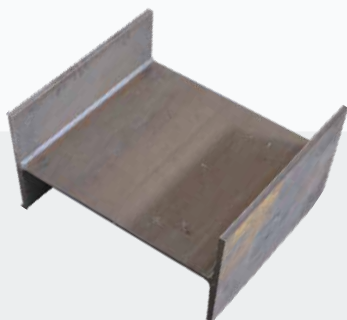


### ULTRA-FAST CUTTING PROCESS DATABASE



\* For complete details, please reach out to our sales team at [sales@bodor.com](mailto:sales@bodor.com).

## Cutting samples



STRUCTURAL STEEL



SHEET METAL



TUBE METAL



## 5 Years of Premium Warranty

For three Bodor core components

**BodorThinker**

Control System

**BodorPower**

Laser Source

**BodorGenius**

Laser Head



Streamline your integration  
and quality assurance.

### INTEGRATED PRODUCTION

Unified origin for stable  
and efficient quality

### INTEGRATED DESIGN

High industrial integration,  
perfect system compatibility

### INTEGRATED TESTING

Rigorously tested for  
ultimate performance

### INTEGRATED DELIVERY

Package and shipped as a  
whole for enhanced quality

For further machine specs and information and enquires please contact Hare & Forbes Machineryhouse.

[www.machineryhouse.com.au](http://www.machineryhouse.com.au)

Or

Phone: 1300 202 200

**HARE & FORBES**  
**MACHINERYHOUSE**

Sydney: (02) 9890 9111  
Mon - Fri 8:00am - 4:30pm  
Sat - 8:30am - 12:30pm

Melbourne: (03) 9212 4422  
Mon - Fri 8:00am - 4:30pm  
Sat - 8:30am - 12:30pm

Adelaide: (08) 9373 9969  
Mon - Fri 8:00am - 4:30pm  
Sat - 8:30am - 12:00pm

Brisbane: (07) 3715 2200  
Mon - Fri 8:00am - 4:30pm  
Sat - 8:00am - 12:00pm

Perth: (08) 9373 9999  
Mon - Fri 8:00am - 4:30pm  
Sat - 8:30am - 12:30pm