

SPARE PARTS SECTION

Pipe & Tube Notcher - Linisher

Models

PN-76HD

Order Code, L851

EDITION No : PN-76HD-1
DATE OF ISSUE : 01/2024

The following section covers the spare parts diagrams and lists that were current at the time this manual was originally printed. Due to continuous improvements of the machine, changes may be made at any time without notification.

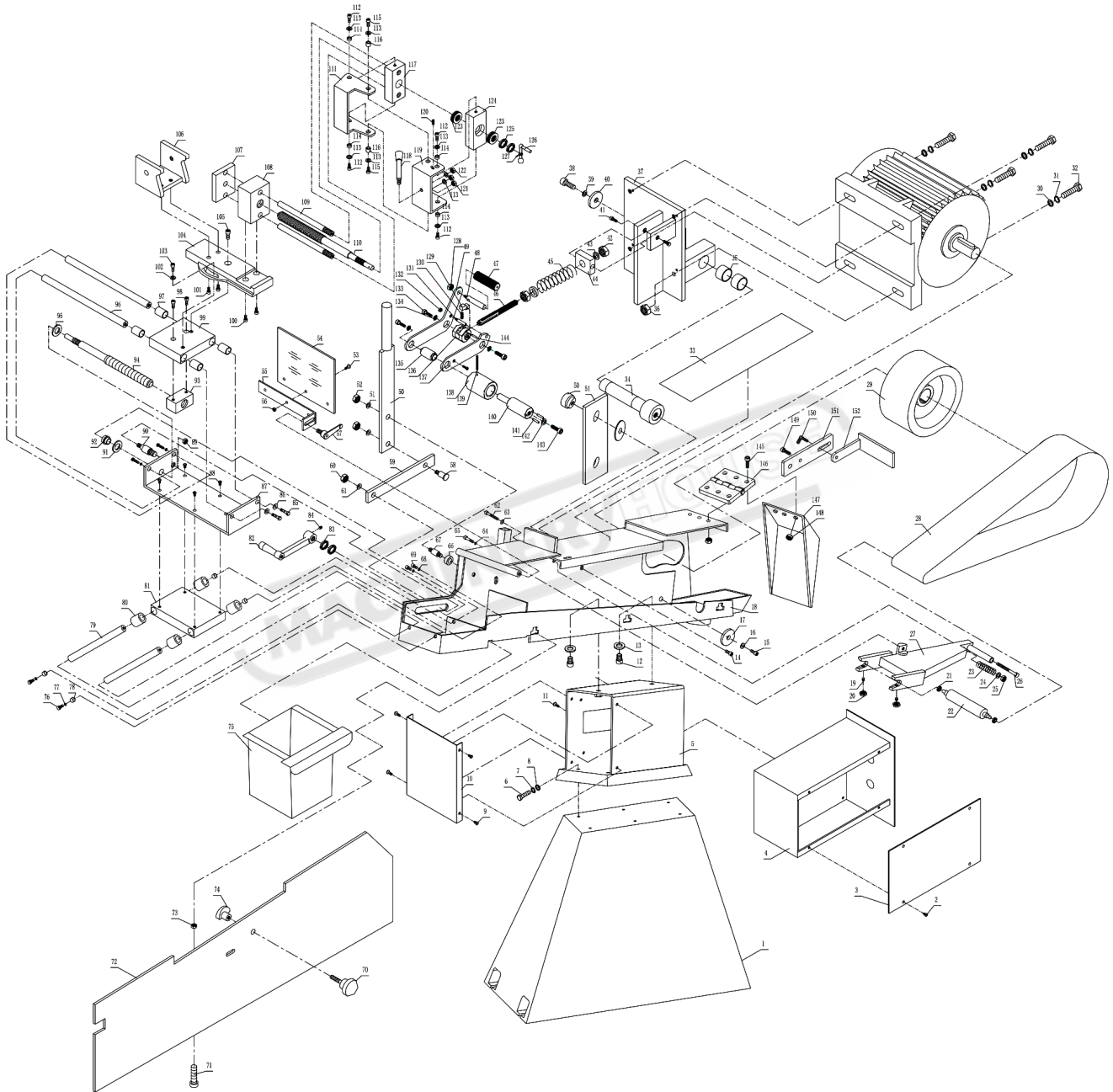
HOW TO ORDER SPARE PARTS

1. Have your machines model number, serial number & date of manufacture on hand, these can be found on the specification plate mounted on the machine
2. A scanned copy of your parts list/diagram with required spare part/s identified.

NOTE: SOME PARTS MAY ONLY BE AVAILABLE AS AN ASSEMBLY

3. Go to www.machineryhouse.com.au/contactus and fill out the inquiry form attaching a copy of scanned parts list.

SPARE PARTS



SPARE PARTS LIST

Item	DESCRIPTION	Qty	Item	DESCRIPTION	Qty
1	Base	1	51	Washer 10	2
2	Screw M4×6	4	52	Nut M10	2
3	Electrical installation board	1	53	Screw M5×8	3
4	Electric box	1	54	Safety guard	1
5	Connecting seat	1	55	Protecting plate support	1
6	Bolt M8×20	6	56	Nut M5	3
7	Spring washer 8	6	57	Adjustable locking handle	1
8	Plain washer 8	6	58	Screw	1
9	Screw M5×8	4	59	Connecting rod	1
10	Front plate	1	60	Washer 8	1
11	Screw M6×10	4	61	Nut M8	1
12	Screw M12×35	2	62	Screw M8×100	1
13	Plain washer 12	2	63	Washer 8	1
14	Screw M12×30	1	64	Washer 10	2
15	Screw M12×50	1	65	Screw M12×35	2
16	Spring washer 12	1	66	Spacer	1
17	Washer	1	67	Double bolt	1
18	Body	1	68	Washer 8	4
19	Set screw	2	69	Bolt M8×25	4
20	Nut M10	2	70	Screw M8×12	1
21	Bearing 608-2Z	2	71	Screw M5×12	3
22	Belt shaft	1	72	Side cover	1
23	Spring 1×12×19	1	73	Nut M5	3
24	Washer 8	1	74	Locking block	1
25	Nut M8	1	75	Chip box	1
26	Screw M8×100	1	76	Screw	4
27	Belt bracket	1	77	Washer 8	4
28	Belt	1	78	Bush	4
29	Drive pulley	1	79	Slide bar	2
30	Spring washer 10	4	80	Copper cover	2
31	Washer 10	4	81	Slide bar seat	1
32	Screw M10×4	4	82	Adjustable locking handle	1
33	Black lead belt	1	83	Round nuts M12×1.25	2
34	Shaft	1	84	Screw M6×8	1
35	Copper cover	2	85	Bolt M8×25	4
36	Nut M10	1	86	Washer 8	4
37	Motor seat	1	87	Baseboard	1
38	Screw M10×20	1	88	Screw M6×12	4
39	Washer 12	1	89	Nut M12	1
40	Washer 10	1	90	Sipper rod	1
41	Screw M10×20	2	91	Washer 14	1
42	Nut M16	2	92	Spacer	1
43	Washer 16	2	93	Nut	1
44	Fix block	1	94	Lead screw	1
45	Spring 1.4×20×35	1	95	Washer 14	1
46	Arbor	1	96	Round guide	2
47	Handle sleeve	1	97	Copper cover	4
48	Handle	1	98	Screw M8×40	2
49	Connecting rod	1	99	Slide block	1
50	Control handle	1	100	Screw M8×30	2

NOTE: SOME INDIVIDUAL PARTS MAY ONLY BE AVAILABLE AS AN ASSEMBLY

SPARE PARTS LIST

Item	DESCRIPTION	Qty	Item	DESCRIPTION	Qty
101	Screw M8×20	2	127	Pin 3×22	1
102	Washer 8	1	128	Acorn nut M10	1
103	Screw M8×20	1	129	Pawl	1
104	Rotary table	1	130	Spring 0.9×7×15	1
105	Screw M10×35	1	131	Backing pin	1
106	Jaw	1	132	Acorn nut M8	1
107	Clamp	1	133	Screw M8×14	4
108	Nut	1	134	Big washer 8	3
109	Lead rod	2	135	Supporting sleeve	1
110	Lead screw	1	136	Rotation shaft	1
111	Interlocking block A	1	137	Connecting rod B	1
112	Screw M6×16	4	138	Positioning sleeve	1
113	Washer 6	8	139	Spring pin 6×50	1
114	Bush A	4	140	Supporting shaft	1
115	Screw M6×20	4	141	Pin 6×16	2
116	Bush B	4	142	Big washer 12	1
117	Moving block	1	143	Screw M12×30	1
118	Long rotation handle M8×125×20	1	144	Pin 5×20	1
119	Interlocking block B	1	145	Screw M6×16	6
120	Screw M3×10	1	146	Hinge	1
121	Nut M8	1	147	Rear cover	1
122	Nut M8	4	148	Nut 6	6
123	Ball thrust bearing 51101	2	149	Screw M8×16	1
124	Fixed block	1	150	Lock screw	1
125	Round nuts M12×1.25	2	151	Tool post stent	1
126	Single crank handle A-10×32	1	152	Tool post	1

NOTE: SOME INDIVIDUAL PARTS MAY ONLY BE AVAILABLE AS AN ASSEMBLY

ELECTRICAL DIAGRAM

