

# SPARE PARTS SECTION

## Shrinker Stretcher

**Model. SHST1.2H**

Order Code S2262

*Edition No* : SHST1.2H-1

*Date of Issue* : 02/2021

The following section covers the spare parts diagrams and lists that were current at the time this manual was originally printed. Due to continuous improvements of the machine, changes may be made at any time without notification.

### HOW TO ORDER SPARE PARTS

1. Have your machines **model number, serial number & date of manufacture** on hand, these can be found on the specification plate mounted on the machine
2. A scanned copy of your parts list/diagram with required spare part/s identified.

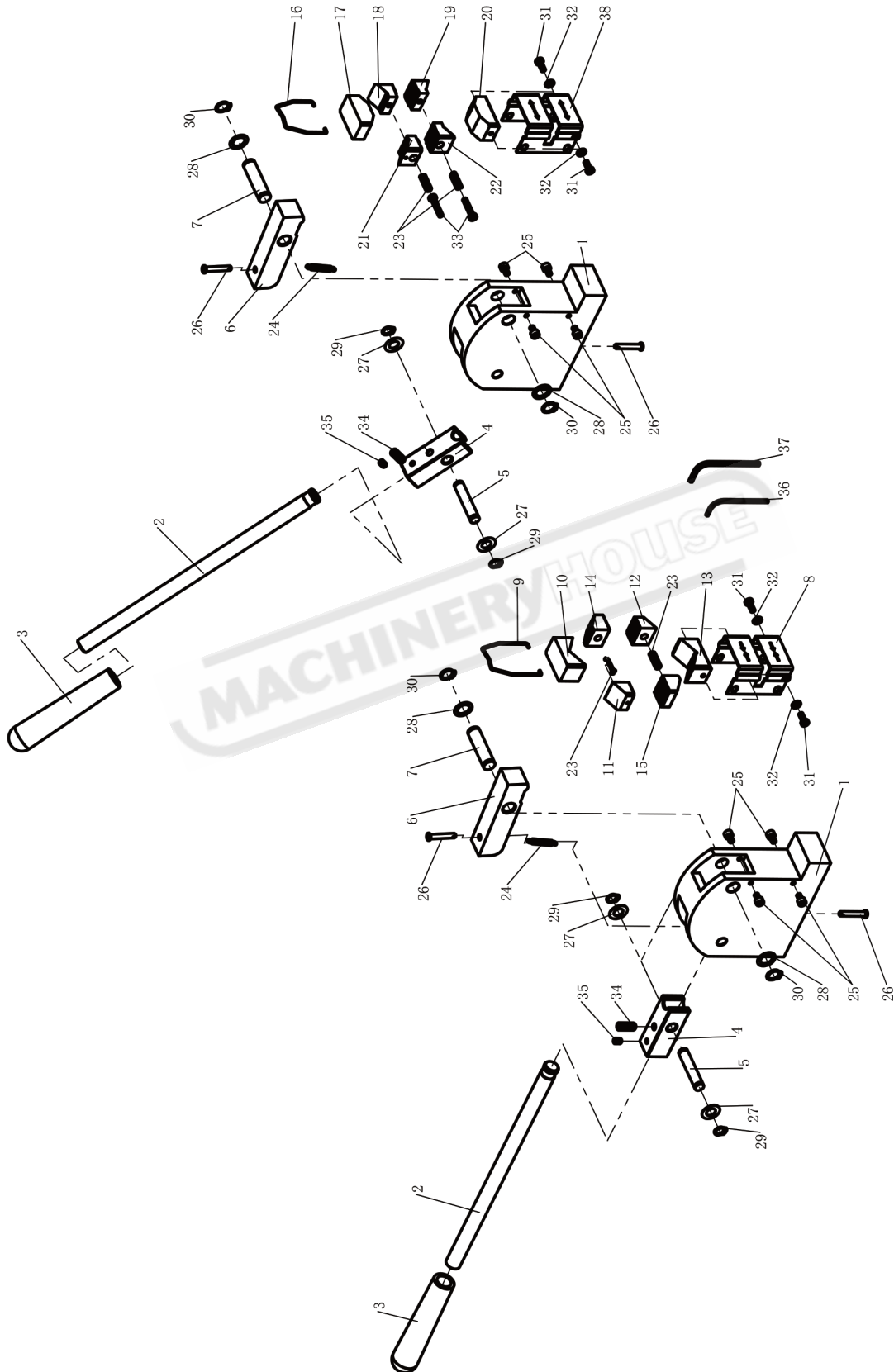
**NOTE: SOME PARTS MAY ONLY BE AVAILABLE AS AN ASSEMBLY**

3. Go to [www.machineryhouse.com.au/contactus](http://www.machineryhouse.com.au/contactus) and fill out the inquiry form attaching a copy of scanned parts list.

### CONTENTS

Spare Parts Diagram.....	12
Spare Parts List.....	13

### SPARE PARTS DIAGRAM



**SPARE PARTS LIST**

ITEM	DESCRIPTION	QTY.	ITEM	DESCRIPTION	QTY.
1	BASE	2	20	STRETCHER LOWER V-BLOCK	
2	HANDLE	2	21	STRETCHER UPPER JAW 2	
3	HANDLE COVER	2	22	STRETCHER LOWER JAW 2	
4	BACK BLOCK	2	23	SUSPENSION SPRING	
5	BACK SHAFT	2	24	SPRING	
6	FRONT BLOCK	2	25	SCREW M5 X 8MM	
7	FRONT SHAFT	2	26	PIN	
8	JAW COVER	1	27	WASHER 10MM	
9	SHRINKER HOOK	1	28	WASHER 13MM	
10	SHRINKER UPPER V-BLOCK	1	29	C-RING	
11	SHRINKER UPPER SMALL JAW	1	30	C-RING	
12	SHRINKER LOWER SMALL JAW	1	31	SCREWM5 X 12	
13	SHRINKER LOWER V-BLOCK	1	32	WASHER 5MM	
14	SHRINKER UPPER BIG JAW	1	33	SCREW M5 X 25MM	
15	SHRINKER LOWER BIG JAW	1	34	SCREW M8 X 20MM	
16	STRETCHER HOOK	1	35	SCREW M6 X 10	
17	STRETCHER UPPER V-BLOCK	1	36	HEX HEAD WRENCH 3MM	
18	STRETCHER UPPER JAW 1	1	37	HEX HEAD WRENCH 4MM	
19	STRETCHER LOWER JAW 1	1	38	JAW COVER	

**NOTE: SOME INDIVIDUAL PARTS MAY ONLY BE AVAILABLE AS AN ASSEMBLY**