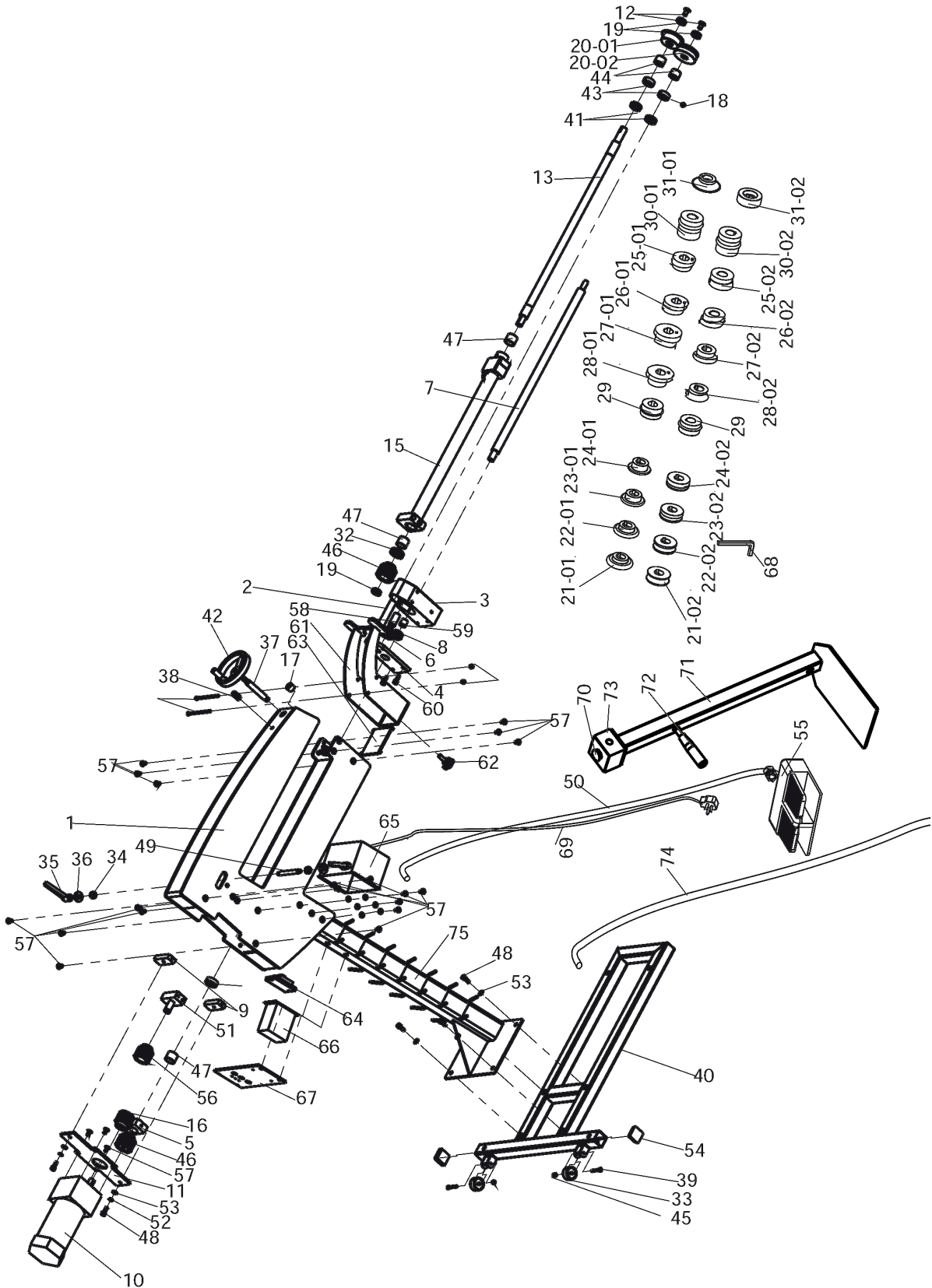




OPERATION MANUAL

SPARE PARTS DIAGRAM MBR-610





OPERATION MANUAL

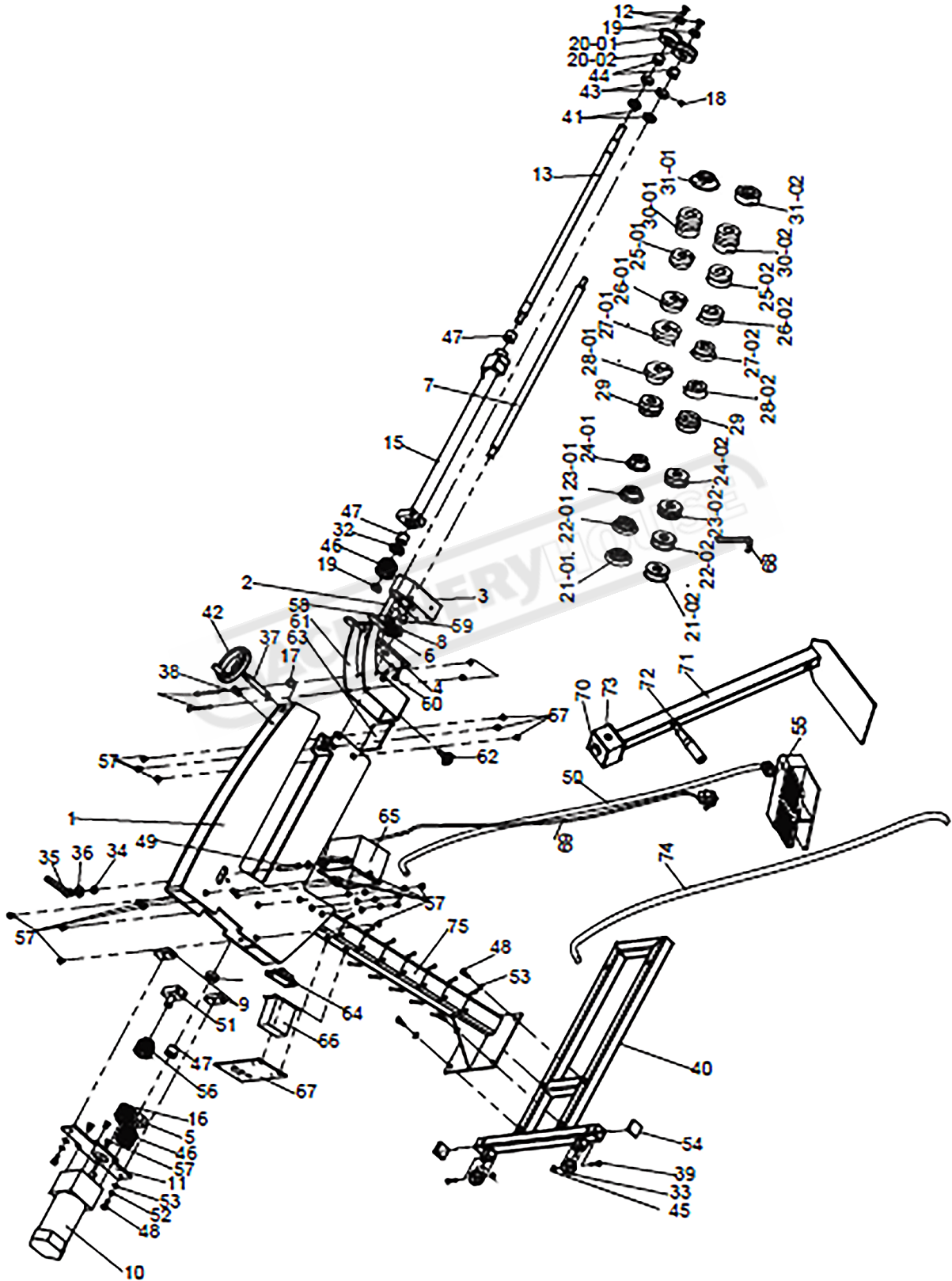
SPARE PARTS LIST MBR-610

Part No.	Description	Qty.	Part No.	Description	Qty.
1	Frame for MBR-610	1	33	Wheel	2
2	Gear	1	34	Washer	2
3	Shaft Seat	1	35	Lock Handle	2
4	Shaft Seat Cover	1	36	Washer	2
5	Shaft Seat	1	37	Threaded Rod	1
6	Gear T21m2	1	38	Long Nut M6	1
7	Driving Shaft	1	39	Bolt M6X40	2
8	Gear T14m2	1	40	Stand	1
9	Plate	2	41	Bearing 51104	2
10	Motor	1	42	Handwheel	1
11	Square Plate	1	43	Collar	2
12	Screw M10X20	2	44	Spacer	2
13	Upper Shaft	1	45	Nut M6	2
14	Bushing	2	46	Gear T25m2	2
15	Upper Shaft Bushing	1	47	Bushing	3
16	Gear T23m2	1	48	Screw M8X20	12
17	Pressing Clamp	1	49	Shaft	1
18	Screw M8X8	6	50	Foot Switch Cable	1
19	Fixing Washer	3	51	Base Fixing Gear	1
20-01	Bead Roller Die 5/32"A	1	52	Spring Washer 8mm	12
20-02	Bead Roller Die 5/32"B	1	53	Washer 8mm	12
21-01	Bead Roller Die 1/4"A	1	54	Casing Cap	2
21-02	Bead Roller Die 1/4"B	1	55	Foot Switch	1
22-01	Bead Roller Die 3/8"A	1	56	Gear T23m2	1
22-02	Bead Roller Die 3/8"B	1	57	Screw M8X16	20
23-01	Bead Roller Die 15/32"A	1	58	Shaft	1
23-02	Bead Roller Die 15/32"B	1	59	Bushing	1
24-01	Bead Roller Die 19/32"A	1	60	Screw M6X20	4
24-02	Bead Roller Die 19/32"B	1	61	Guide Fence	1
25-01	Flange Roller Die	1	62	Knob	1
25-02	Flange Roller Die	1	63	Plate	1
26-01	Flange Roller Die 1/8"A	1	64	Safe Switch	1
26-02	Flange Roller Die 1/8"B	1	65	Switch Box	1
27-01	Flange Roller Die 1/4"A	1	66	Speed Change Device	1
27-02	Flange Roller Die 1/4"B	1	67	Box	1
28-01	Flange Roller Die 3/8"A	1	68	Hex Key Wrench 6mm	1
28-02	Flange Roller Die 3/8"B	1	69	Power Cable	1
29	Shearing Die	2	70	Emergency Stop	1
30-01	Ogee Beading Die A	1	71	Stand	1
30-02	Ogee Beading Die B	1	72	Handle	1
31-01	Wiring Die A	1	73	Emergency Stop Box	1
31-02	Wiring Die B	1	74	PVC Coated Steel Conduit	1
32	Bearing 51105	2	75	Leg	1



OPERATION MANUAL

SPARE PARTS DIAGRAM MBR-1070





OPERATION MANUAL

SPARE PARTS LIST MBR-1070

Part No.	Description	Qty.	Part No.	Description	Qty.
1	Frame For MBR-1070	1	33	Wheel	2
2	Gear	1	34	Washer	2
3	Shaft Seat	1	35	Lock Handle	2
4	Shaft Seat Cover	1	36	Washer	2
5	Shaft Seat	1	37	Threaded Rod	1
6	Gear T21m2	1	38	Long Nut M6	1
7	Driving Shaft	1	39	Bolt M6X40	2
8	Gear T14m2	1	40	Stand	1
9	Plate	2	41	Bearing 51104	2
10	Motor	1	42	Handwheel	1
11	Square Plate	1	43	Collar	2
12	Screw M10X20	2	44	Spacer	2
13	Upper Shaft	1	45	Nut M6	2
14	Bushing	2	46	Gear T25m2	2
15	Upper Shaft Bushing	1	47	Bushing	3
16	Gear T23m2	1	48	Screw M8X20	12
17	Pressing Clamp	1	49	Shaft	1
18	Screw M8X8	6	50	Foot Switch Cable	1
19	Fixing Washer	3	51	Base Fixing Gear	1
20-01	Bead Roller Die 5/32"A	1	52	Spring Washer 8mm	12
20-02	Bead Roller Die 5/32"B	1	53	Washer 8mm	12
21-01	Bead Roller Die 1/4"A	1	54	Casing Cap	2
21-02	Bead Roller Die 1/4"B	1	55	Foot Switch	1
22-01	Bead Roller Die 3/8"A	1	56	Gear T23m2	1
22-02	Bead Roller Die 3/8"B	1	57	Screw M8X16	20
23-01	Bead Roller Die 15/32"A	1	58	Shaft	1
23-02	Bead Roller Die 15/32"B	1	59	Bushing	1
24-01	Bead Roller Die 19/32"A	1	60	Screw M6X20	4
24-02	Bead Roller Die 19/32"B	1	61	Guide Fence	1
25-01	Flange Roller Die	1	62	Knob	1
25-02	Flange Roller Die	1	63	Plate	1
26-01	Flange Roller Die 1/8"A	1	64	Safe Switch	1
26-02	Flange Roller Die 1/8"B	1	65	Switch Box	1
27-01	Flange Roller Die 1/4"A	1	66	Speed Change Device	1
27-02	Flange Roller Die 1/4"B	1	67	Box	1
28-01	Flange Roller Die 3/8"A	1	68	Hex Key Wrench 6mm	1
28-02	Flange Roller Die 3/8"B	1	69	Power Cable	1
29	Shearing Die	2	70	Emergency Stop	1
30-01	Ogee Beading Die A	1	71	Stand	1
30-02	Ogee Beading Die B	1	72	Handle	1
31-01	Wiring Die A	1	73	Emergency Stop Box	1
31-02	Wiring Die B	1	74	PVC Coated Steel Conduit	1
32	Bearing 51105	2	75	Leg	1



General Machinery Safety Instructions

Machinery House
requires you to read this entire Manual before using this machine.

- 1. Read the entire Manual before starting machinery.** Machinery may cause serious injury if not correctly used.
- 2. Always use correct hearing protection when operating machinery.** Machinery noise may cause permanent hearing damage.
- 3. Machinery must never be used when tired, or under the influence of drugs or alcohol.** When running machinery you must be alert at all times.
- 4. Wear correct Clothing.** At all times remove all loose clothing, necklaces, rings, jewelry, etc. Long hair must be contained in a hair net. Non-slip protective footwear must be worn.
- 5. Always wear correct respirators around fumes or dust when operating machinery.** Machinery fumes & dust can cause serious respiratory illness. Dust extractors must be used where applicable.
- 6. Always wear correct safety glasses.** When machining you must use the correct eye protection to prevent injuring your eyes.
- 7. Keep work clean and make sure you have good lighting.** Cluttered and dark shadows may cause accidents.
- 8. Personnel must be properly trained or well supervised when operating machinery.** Make sure you have clear and safe understanding of the machine you are operating.
- 9. Keep children and visitors away.** Make sure children and visitors are at a safe distance for you work area.
- 10. Keep your workshop childproof.** Use padlocks, Turn off master power switches and remove start switch keys.
- 11. Never leave machine unattended.** Turn power off and wait till machine has come to a complete stop before leaving the machine unattended.
- 12. Make a safe working environment.** Do not use machine in a damp, wet area, or where flammable or noxious fumes may exist.
- 13. Disconnect main power before service machine.** Make sure power switch is in the off position before re-connecting.
- 14. Use correct amperage extension cords.** Undersized extension cords overheat and lose power. Replace extension cords if they become damaged.
- 15. Keep machine well maintained.** Keep blades sharp and clean for best and safest performance. Follow instructions when lubricating and changing accessories.
- 16. Keep machine well guarded.** Make sure guards on machine are in place and are all working correctly.
- 17. Do not overreach.** Keep proper footing and balance at all times.
- 18. Secure workpiece.** Use clamps or a vice to hold the workpiece where practical. Keeping the workpiece secure will free up your hand to operate the machine and will protect hand from injury.
- 19. Check machine over before operating.** Check machine for damaged parts, loose bolts, Keys and wrenches left on machine and any other conditions that may effect the machines operation. Repair and replace damaged parts.
- 20. Use recommended accessories.** Refer to instruction manual or ask correct service officer when using accessories. The use of improper accessories may cause the risk of injury.
- 21. Do not force machinery.** Work at the speed and capacity at which the machine or accessory was designed.
- 22. Use correct lifting practice.** Always use the correct lifting methods when using machinery. Incorrect lifting methods can cause serious injury.
- 23. Lock mobile bases.** Make sure any mobile bases are locked before using machine.
- 24. Allergic reactions.** Certain metal shavings and cutting fluids may cause an allergic reaction in people and animals, especially when cutting as the fumes can be inhaled. Make sure you know what type of metal and cutting fluid you will be exposed to and how to avoid contamination.
- 25. Call for help.** If at any time you experience difficulties, stop the machine and call you nearest branch service department for help.

WARNING

Swage & Jenny Machine Safety Instructions

Machinery House
requires you to read this entire Manual before using this machine.

- 1. Maintenance.** Make sure the Swage & Jenny is turned off and disconnect from the main power supply and make sure all moving parts have come to a complete stop before any inspection, adjustment or maintenance is carried out.
- 2. Swage & Jenny Condition.** A Swage & Jenny must be maintained for a proper working condition. Never operate a Swage & Jenny that has damaged or worn parts. Scheduled routine maintenance should be performed on a scheduled basis.
- 3. Roll Condition.** Never operate a Swage & Jenny with a damaged or badly worn rolls. Replace if required. Rolls should never be greased or lubricated as rolls will slip the material and will not bend.
- 4. Roll Direction.** Be aware of the correct rotational axis of the motor when a qualified electrician connects the Machine.
- 5. Hand Hazard.** Keep hands and fingers clear from moving parts. Serious injury can occur if hand or finger tips get pinched by rolls and can be dragged into machine.
- 6. Personal Protection.** Gloves, safety glasses and safety hat are recommended during operation.
- 7. Avoiding Entanglement.** Swage & Jenny guards must be used at all times. Tie up long hair and use the correct hair nets to avoid any entanglement with the Swage & Jenny moving parts.
- 8. Understand the machines controls.** Make sure you understand the use and operation of all controls.
- 9. Trained Operator.** This machine must be operated by authorized and trained personnel.
- 10. Power outage.** In the event of a power failure during use of the machine, turn off all switches to avoid possible sudden start up once power is restored.
- 11. Work area hazards.** Keep the area around the Swage & Jenny clean from oil, tools, chips. Pay attention to other persons in the area and know what is going on around the area to ensure unintended accidents.
- 12. Guards.** Do not operate Swage & Jenny without the correct guards in place. Necessary guards protect you from injuries by gearbox, motors and other moving gears & parts. The only other area which needs to be carefully monitored during use is the rotational area of the rolls.
- 13. Material condition.** Material must be clean of oil and dry. Oily material can slip and will not bend.
- 14. Material hardness.** Make sure your hardness is the same throughout the material, we recommend that you use certified material. Never bend hard steel, glass or fragile material on this machine.
- 15. Feeding material.** Making a tight bend in one pass is not possible. So you need several passes before you can achieve a certain radius. Tighter curves and full radius always need more passes.
- 16. Stopping the Rolls.** Do not stop or slow the rolls with your hand or workpiece. Allow the Swage & Jenny to stop on its own.
- 17. Emergency stop.** Use the emergency stop button in case of any emergency.
- 18. Hearing protection and hazards.** Always wear hearing protection as noise generated from machine and workpiece can cause permanent hearing loss over time.
- 19. Call for help.** If at any time you experience difficulties, stop the machine and call your nearest branch service department for help.

PLANT SAFETY PROGRAM

NEW MACHINERY HAZARD IDENTIFICATION, ASSESSMENT & CONTROL

Swage & Jenny Machine

Developed in Co-operation Between A.W.I.S.A and Australia Chamber of Manufactures
This program is based upon the Safe Work Australia, Code of Practice - Managing Risks of Plant in the Workplace (WHSA 2011 No10)

Item No.	Hazard Identification	Hazard Assessment	Risk Control Strategies <small>(Recommended for Purchase / Buyer / User)</small>
A	ENTANGLEMENT CRUSHING	HIGH LOW	Eliminate, avoid loose clothing / Long hair etc. Secure & support work material. Ensure machine is bolted down.
B	CUTTING, STABBING, PUNCTURING.	MEDIUM	Isolate power to machine prior to any checks or maintenance being carried out. Do not adjust or clean until the machine has fully stopped. Wear gloves to prevent cuts from material.
D	SHEARING	MEDIUM	Isolate power to machine when checks or maintenance is being carried out. Make sure all guards are secured shut when machine is on. Hands should be kept clear of moving parts such as rolls etc.
F	STRIKING	MEDIUM	Ensure area is kept clear of material being rolled.
H	ELECTRICAL	MEDIUM	All electrical enclosures should only be opened with a tool that is not to be kept with the machine. Machine should be installed & checked by a Licensed Electrician.
O	OTHER HAZARDS, NOISE.	LOW	Wear hearing protection as required.
Plant Safety Program to be read in conjunction with manufactures instructions			



www.machineryhouse.com.au



www.machineryhouse.co.nz

Authorised and signed by:
Safety officer:



Manager:



Revised Date: 12th March 2012