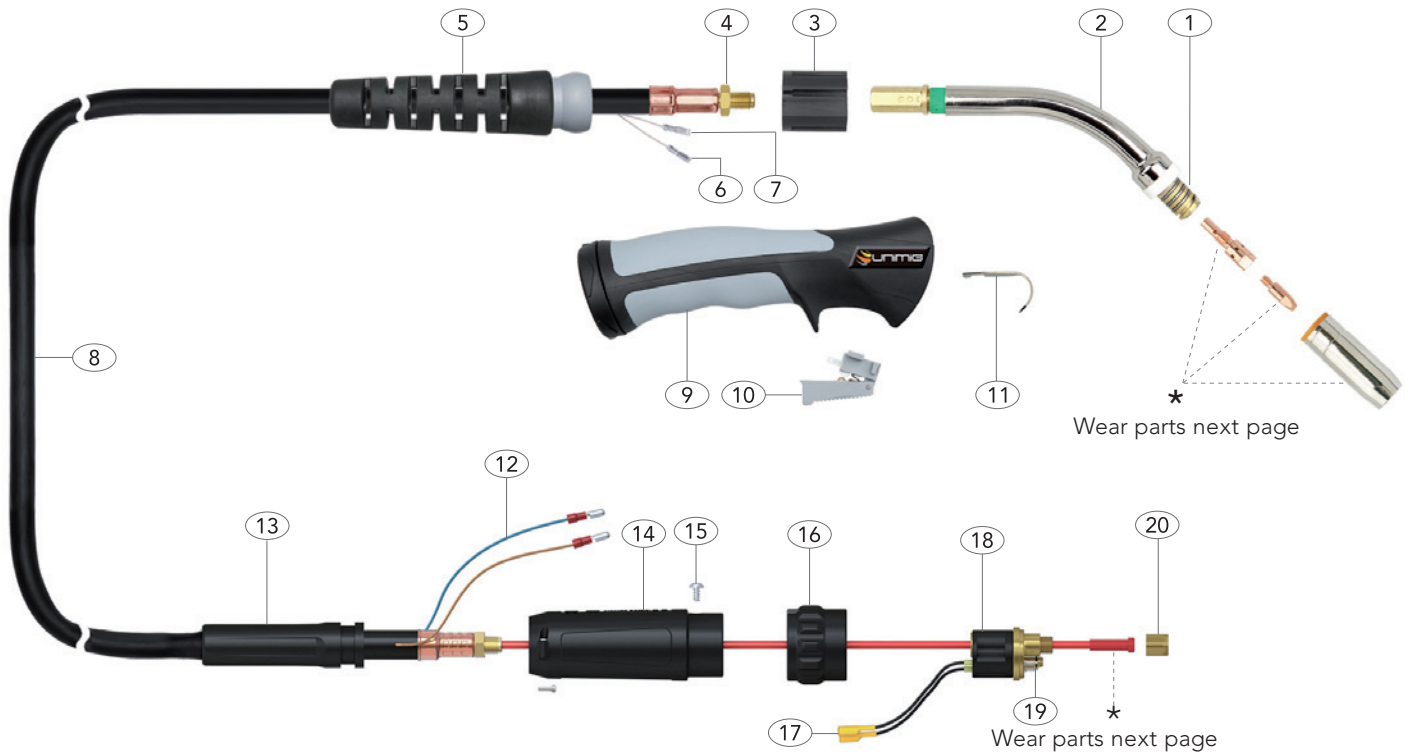


# SB25 MIG TORCH

## 250A AIR COOLED MIG WELDING TORCH

Rating: 230A CO<sub>2</sub> 200A mixed gas EN60974-7 @ 60% duty cycle. 0.8 to 1.2mm wires



Torch Model			
Description	Part Number	4 Mt	5 Mt
	3 Mt		
SB25 Suregrip Ergo Torch Package	SB25-3M	SB25-4M	SB25-5M

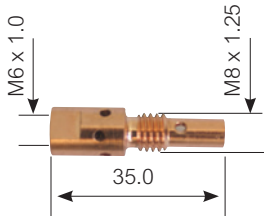
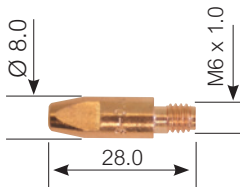
Spare Parts			
Part Number	Description	Part Number	Description
1	GNS25 Shroud Spring	10	UG2516 Medium / Large Ergo Trigger
2	SNK25 Swan Neck Assembly	11	UB2517 Hanger Hook
	SNKF Swan Neck Flexible Assembly	12	UB1522 Cable Terminal Male
3	UG1515 Ergo Handle Location Body	13	UPA2041 Cable Support
4	UB1505 Lock Nut	14	UB1518 Gun Plug Housing C/W Nut
5	UG8015 Handle Cable Support C/W Ball Joint	15	UB1541 Gun Plug Screw
6	UB1521 Cable Terminal	16	UB1519/S Gun Plug Nut
7	UB1521-C Cable Terminal Cover	17	UB1523 Gun Plug Terminal Female
8	UB2503-30 Hyperflex Cable Assembly x 3mt	18	UC1528 Hybrid Gun Plug Body C/W Spring Pins
	UB2503-40 Hyperflex Cable Assembly x 4mt	19	UB1524 Gun Plug 'O' Ring
	UB2503-50 Hyperflex Cable Assembly x 5mt	20	UB1525 Liner Nut
9	UG2514 Ergo Handle Kit C/W Lock Nut		

# SB25 MIG TORCH

## Front end consumables

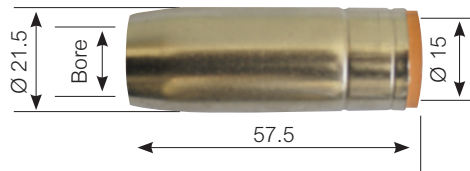
### SB25 Contact Tips

Part Number	Description	
PCT0009-06	Contact Tip Steel (0.6mm)	QTY10
PCT0009-08	Contact Tip Steel (0.8mm)	QTY10
PCT0009-09	Contact Tip Steel (0.9mm)	QTY10
PCT0009-10	Contact Tip Steel (1.0mm)	QTY10
PCT0009-12	Contact Tip Steel (1.2mm)	QTY10
PCT0009-16	Contact Tip Steel (1.6mm)	QTY10
PCTZR009-09	Contact Tip Steel Long Life (0.9mm)	QTY10
PCTZR009-12	Contact Tip Steel Long Life (1.2mm)	QTY10
PCTAL0009-09	Contact Tip Aluminium (0.9mm)	QTY10
PCTAL0009-10	Contact Tip Aluminium (1.0mm)	QTY10
PCTAL0009-12	Contact Tip Aluminium (1.2mm)	QTY10



### SB25 Tip Holder

Part Number	Description	
PCTH25	Contact Tip Holder	QTY2
PGNS25	Shroud Spring	QTY2



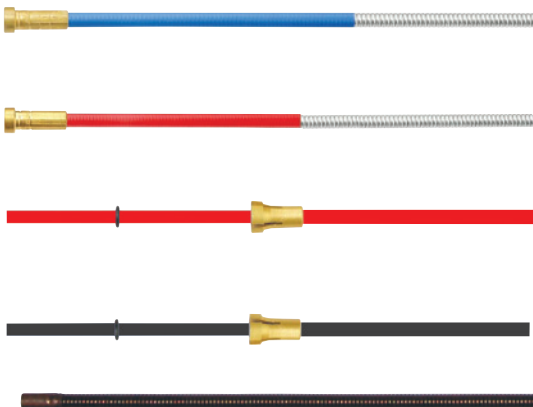
### SB25 Gas Nozzle

Part Number	Description	
PGN25CYL	Cylindrical Nozzle	QTY2
PGN25CON	Conical Nozzle	QTY2
PGN25TAP	Tapered Nozzle	QTY2
PGN25SPOT	Spot Nozzle	QTY2

## Liners

### SB25 Liners

Part Number	Description	
SLB3M	Blue Steel Liner 3 Metre	} 0.6 - 0.9mm
SLB4M	Blue Steel Liner 4 Metre	
SLB5M	Blue Steel Liner 5 Metre	
SLR3M	Red Steel Liner 3 Metre	} 1.0 - 1.2mm
SLR4M	Red Steel Liner 4 Metre	
SLR5M	Red Steel Liner 5 Metre	
TLB3M	Blue Aluminium Liner 3 Metre	} 0.6 - 0.9mm
TLB4M	Blue Aluminium Liner 4 Metre	
TLR3M	Red Aluminium Liner 3 Metre	} 1.0 - 1.2mm
TLR4M	Red Aluminium Liner 4 Metre	
TLY3M	Yellow Aluminium Liner 3 Metre	} 1.2 - 1.6mm
TLY4M	Yellow Aluminium Liner 4 Metre	
NKSTL	Neck Spring for Aluminium	



These parts are manufactured in China and are offered as replacement parts suitable for "BINZEL®" style torches.