

SPARE PARTS SECTION

THICKNESSER

Model T-13B

Order Code W812

Edition No : T-13B-1

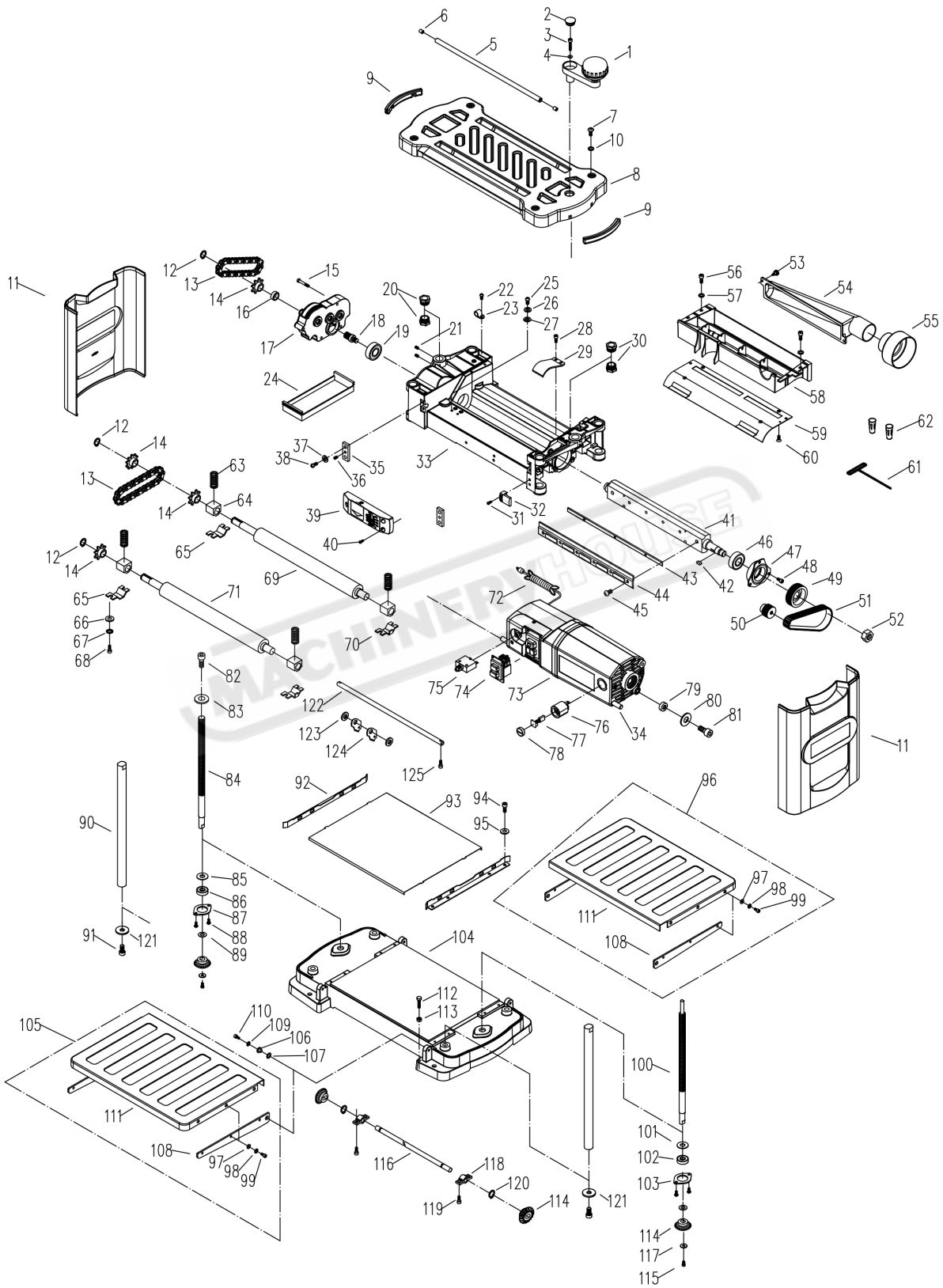
Date of Issue : 11/2020

The following section covers the spare parts diagrams and lists that were current at the time this manual was originally printed. Due to continuous improvements of the machine, changes may be made at any time without notification.

HOW TO ORDER SPARE PARTS

1. Have your machines **model number, serial number & date of manufacture** on hand, these can be found on the specification plate mounted on the machine
2. A scanned copy of your parts list/diagram with required spare part/s identified
3. Go to www.machineryhouse.com.au/contactus and fill out the enquiry form attaching a copy of scanned parts list.

PARTS DIAGRAM



OPERATION MANUAL

SPARE PARTS LIST

No	FACTORY CODE	DESCRIPTION	Qty.
1		Handle assembly	1
2	SPL3047	Cap	1
3	GB70.1-2000	Socket head screw M5X25	1
4		Flat washer 5MM	1
5	MB13-01	O	2
6	EP12028	Roller cap	4
7		Socket pan head screw M6X12	4
8	MB13-02X	Top cover	1
9	MB13-02X-02	Grip	2
10		Flat washer 6MM	4
11	MB13-04	Left cover	2
12	GB93-87	Retaining ring ϕ 15	3
13	GB1243.1-83	Chain 410-26#	2
14	MB13-51	Sprocket	4
15	GB70.1-2000	Socket head screw M5X35	4
16	13102	Spacer	1
17		Gear box assembly	1
18	13113/SPL1047	Pinion	1
19	GB276-94	Ball bearing 6203-3Z	1
20	21758-048-01	Elevating nut(LH)	2
21		Set screw M5X6	4
22		Cable clamp UC-1.5	1
23	GB70.1-2000	Socket head screw M5X10	1
24	MB13-05	Chain cover	1
25	GB818-2000	Pan head screw M5X8	2
26	GB93-87	Lock washer ϕ 5	2
27	GB862.1-87	Serrated washer 5MM	2
28	GB70.1-2000	Socket head screw M5X10	2
29	MB13-07	Belt cover	1
30	21758-048	Elevating nut(RH)	2
31		Pan head screw M4X16	2
32	21758-42	Pointer	1
33	MB13-08	Rollercase	1
34	MB13-15-01	Motor pivot rod	1
35	MB13-16	Rod clamp	2
36		Set screw M5X6	2
37	GB93-87	Lock washer ϕ 5	4
38	GB70.1-2000	Pan head screw M5X10	4
39		Depth-of-cut gauge	1
40		Pan head screw M4X12	3
41	MB13-12	Cutterhead	1
42	GB1096-1979	Key 5X5X10	1

NOTE: SOME INDIVIDUAL PARTS MAY ONLY BE AVAILABLE AS AN ASSEMBLY

SPARE PARTS LIST

No	FACTORY CODE	DESCRIPTION	Qty.
43	EP13202	Blade	2
44	EP13204	Blade clamp	2
45	22560115	Socket head screw M6X16	12
46	GB276-94	Ball bearing 6203-3Z	1
47	SPL1020	Bearing house	1
48	GB70.2-2000	Pan head screw M5X12	3
49	EP12039	Cutterhead pulley	1
50	EP12040	Motor pulley	1
51		Belt 135J6	1
52	GB6172-86	Hex nut M16X.5 LH	1
53	21758-071	Screw	2
54	21758-072	Dust exhaust port	1
55	MB13/3-06	Connecting port	1
56		Socket head screw M5X10	4
57		Flat washer 5MM	4
58	MB13/3-05	Dust chute	1
59	MB13/3-22	Chute plate	1
60		Flat head tap screw ST4.2X13	4
61		Hex wrench 4MM	1
62		Magnet	2
63		Spring 4MM	4
64	EP125024	Bearing block	4
65	EP125004	Left retainer II	2
66	GB96-85	Flat washer ϕ 5	8
67	GB93-87	Lock washer ϕ 5	8
68	GB70.1-2000	Socket head screw M5X12	8
69	MB13-10	Outfeed roller	1
70	EP125006	Right retainer I	2
71	MB13-11	Infeed roller	1
72		Power cord	1
73	YB12A	Motor	1
74		Switch	1
75		Circuit breaker	1
76		Brush holder	2
77		Brush	2
78		Brush cap	2
79	MB13-35	Spacer	1
80	GB96-85	Flat washer ϕ 8	1
81	GB70.1-2000	Socket head screw M8X25	1
82	GB70.1-2000	Socket head screw M5X16	1
83	GB5287-85	Flat washer ϕ 6.6x ϕ 22x2	1
84	21758-085	Elevating screw(LH)	1
85	21758-101	Flat washer	1
86		Ball bearing 6000ZZ	1

NOTE: SOME INDIVIDUAL PARTS MAY ONLY BE AVAILABLE AS AN ASSEMBLY

SPARE PARTS LIST

No	FACTORY CODE	DESCRIPTION	Qty.
87		Bearing clamp plate	1
88		Socket pan head screw M5X10	4
89	21758-105	Flat washer	2
90	21758-88	Column	4
91		Socket head screw M10X35	4
92	MB13-22	Guide	2
93	MB13-27	Table	1
94	GB70.1-2000	Socket head screw M5X8	8
95	GB96-85	Flat washer ϕ 5	8
96		Outfeed extension table	1
97	GB96-85	Flat washer ϕ 5	12
98	GB818-2000	Lock washer 12	12
99		Socket head screw M5X8	12
100	21758-085	Elevating screw(RH)	1
101	21758-101	Flat washer	1
102		Ball bearing 6000ZZ	1
103		Bearing clamp plate	1
104	MB13-30	Base	1
105		Infeed extension table	1
106	MB13-37	Bushing	4
107		Spring washer 8MM	4
108		Table support	2
109	GB93-87	Lock washer ϕ 6	4
110	GB70.1-2000	Socket head screw M6X20	4
111		Extension table	2
112	GB5781-86	Hex head bolt M6X20	4
113	GB41-2000	Hex nut M6	4
114	MB125-006	Bevel gear	4
115		Socket head screw M5X12	2
116	21758-099	Shaft	1
117		Flat washer Φ 5X Φ 15X1.2	2
118	MB13-32	Support	2
119	GB70.1-2000	Socket head screw M5X12	4
120	GB894.1-86	Retaining ring ϕ 10	2
121		Flat washer ϕ 10	4
122	MB13-13	Shaft	1
123		washer	34
124		Anti-kickback block	35
125		Socket head screw M5X20	2

NOTE: SOME INDIVIDUAL PARTS MAY ONLY BE AVAILABLE AS AN ASSEMBLY